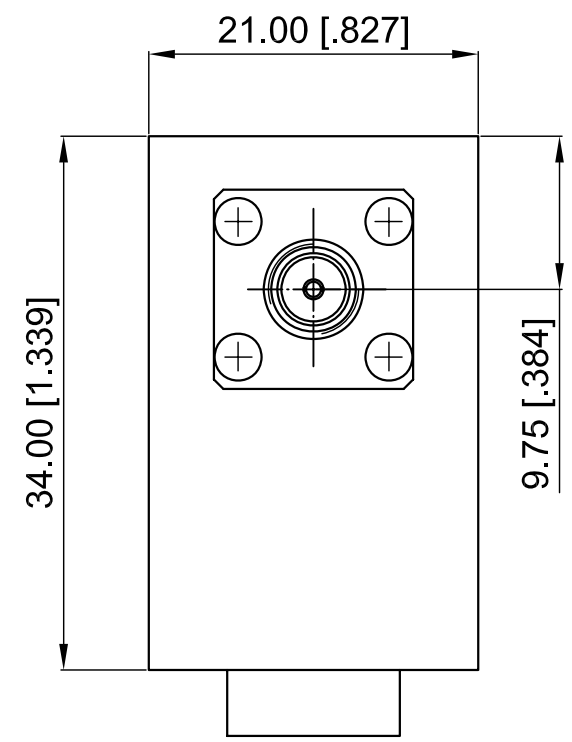
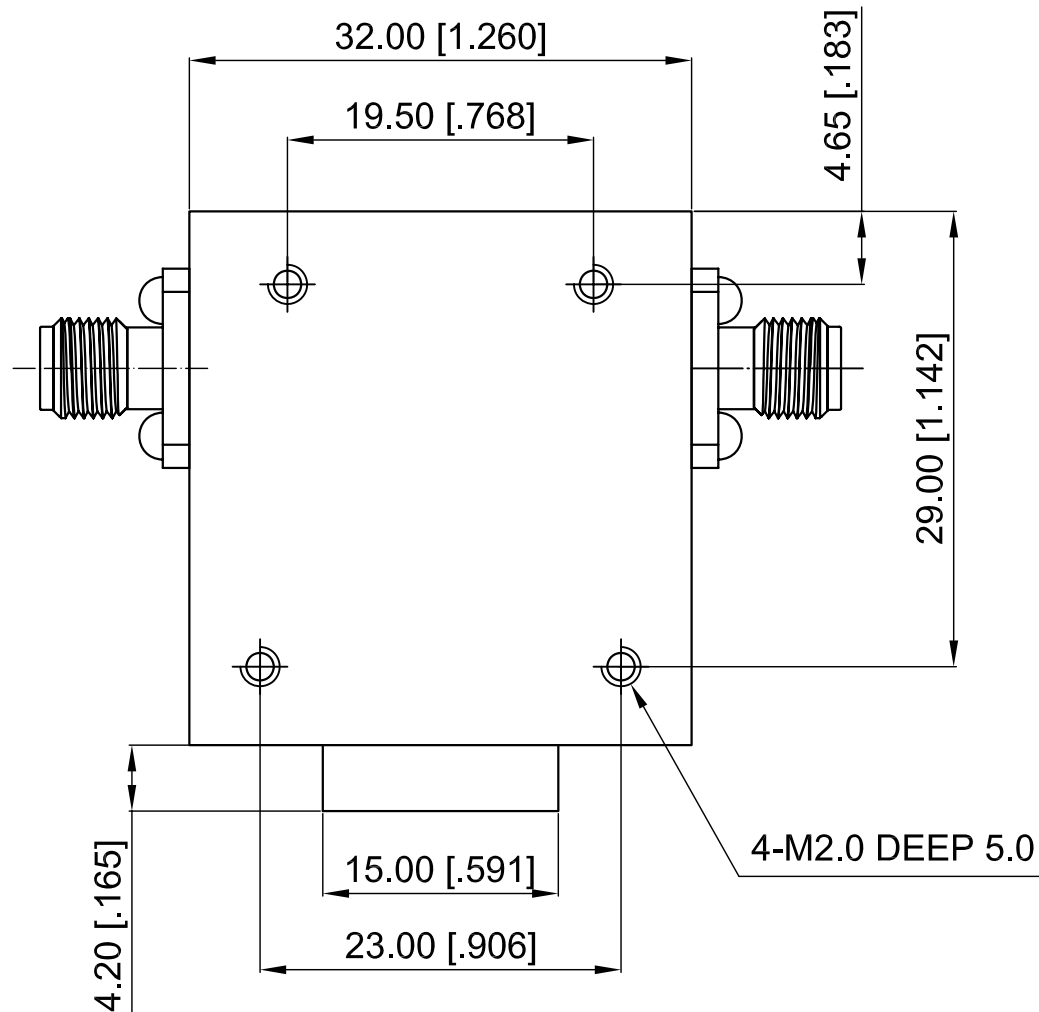


# ELECTRICAL SPECIFICATIONS

Frequency Range: 2-4 GHz  
 Impedance: 50 Ohm  
 Insertion Loss: 0.6 dB max.  
 Isolation: 17 dB min.  
 VSWR: 1.35 max.  
 Forward Power: 50 W  
 Reserve Power: 20 W

Revisions			
Rev	Description	Date	Approved:
A	Initial Release	2014.04.08	A. M



NOTES:  
 1. ALL SPECIFICATIONS ARE SUBJECT TO CHANGE WITHOUT NOTICE AT ANY TIME  
 2. CUSTOMER OUTLINE DRAWING FOR REFERENCE ONLY

Drawn:	W. Y 2014.04.08
Checked:	T. L 2014.04.08
Approved:	A. M 2014.04.08
Unless Otherwise Specified Dimensions are in Millimeters, Dimensions in [ ] are in Inches for Customer Reference Only. Unless Otherwise Specified Tolerance are: .XX ±0.13 [.005"]    .X ±0.20 [.008"]    X ±0.50 [.019"] .X° ±1°                    X° ±2°	

Title:	SMA Female Isolator Freq 2-4 GHz
Part No:	DCI200400B



View:	
Size:	A3
Scale:	4:1
Sheet:	1/1
Rev:	A