

6

5

4

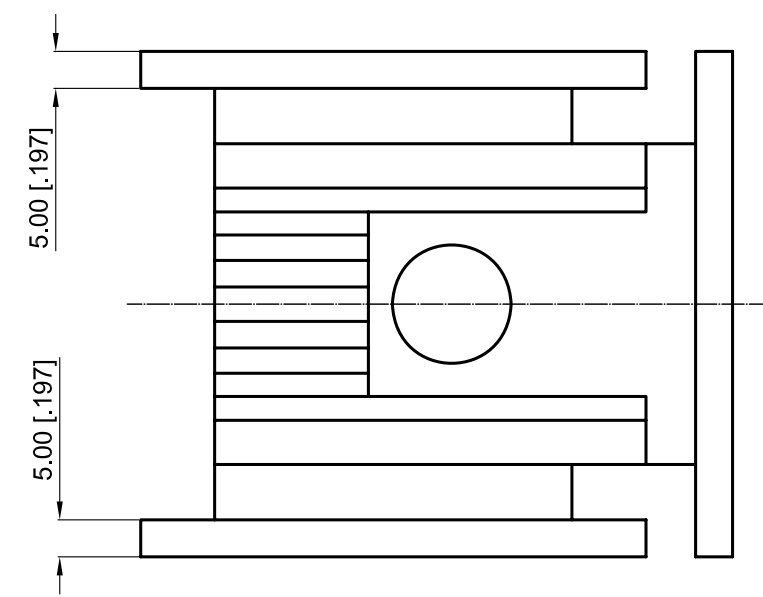
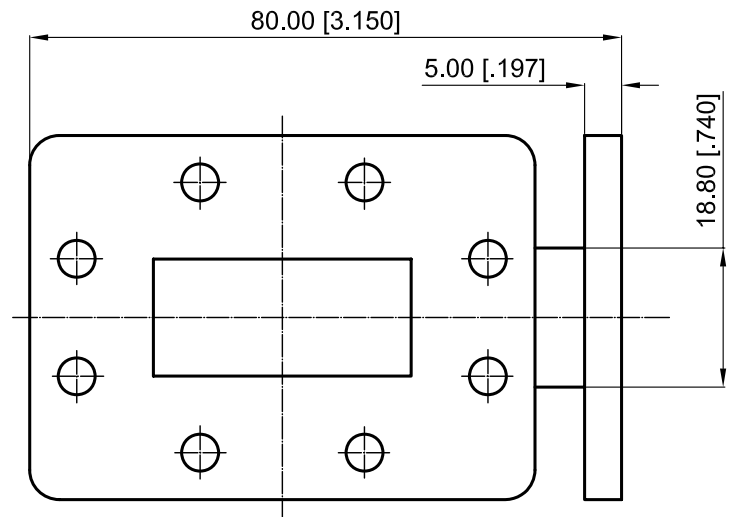
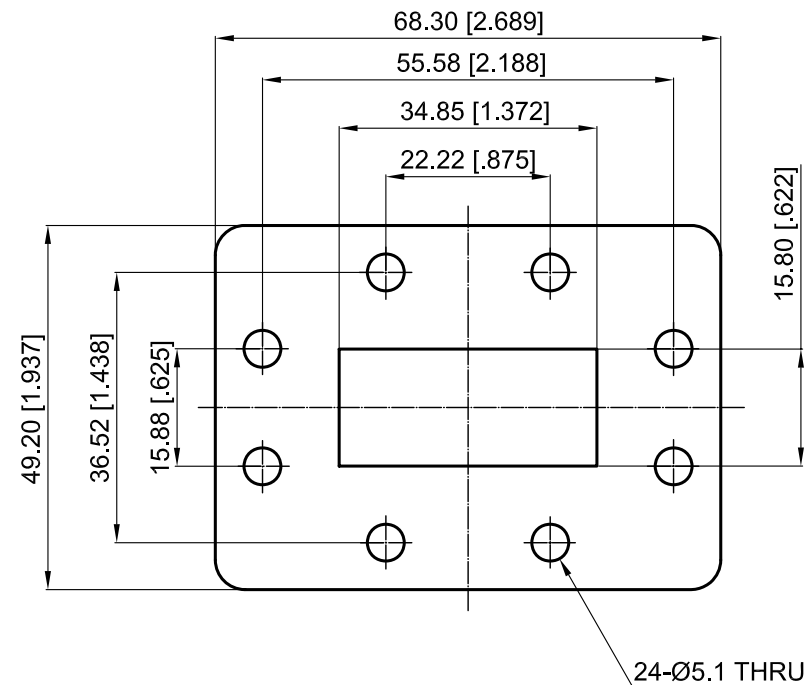
3

2

1

Revisions			
Rev	Description	Date	Approved:
A	Initial Release	2016.4.29	A. M

**ELECTRICAL PERFORMANCE**  
 1. Frequency Range: 5.4-5.9 GHz  
 2. Insertion Loss: 0.4 dB max.  
 3. Isolation: 20 dB min.  
 4. VSWR: 1.25 max.  
 5. Average Power: 300W



A

**NOTES:**  
 1. ALL SPECIFICATIONS ARE SUBJECT TO CHANGE WITHOUT NOTICE AT ANY TIME  
 2. CUSTOMER OUTLINE DRAWING FOR REFERENCE ONLY

Drawn:	W. Y 2016.4.29
Checked:	T. L 2016.4.29
Approved:	A. M 2016.4.29
Unless Otherwise Specified Dimensions are in Millimeters, Dimensions in [ ] are in Inches for Customer Reference Only. Unless Otherwise Specified Tolerance are: .XX ±0.13 [.005"] .X ±0.20 [.008"] X ±0.50 [.019"] .X° ±1° X° ±2°	

Title: WR137 Circulator  
 Freq 5.4-5.9 GHz  
 Average Power 300W

Part No: **DWC540590P**



View:	
Size:	A3
Scale:	1:1
Sheet:	1/1
Rev:	A

6

5

4

3

2

1