

**ELECTRICAL SPECIFICATIONS**

Frequency Range: 5.79-5.81 GHz

Impedance: 50 Ohm

Insertion Loss: 0.4 dB max.

Isolation: 20 dB min.

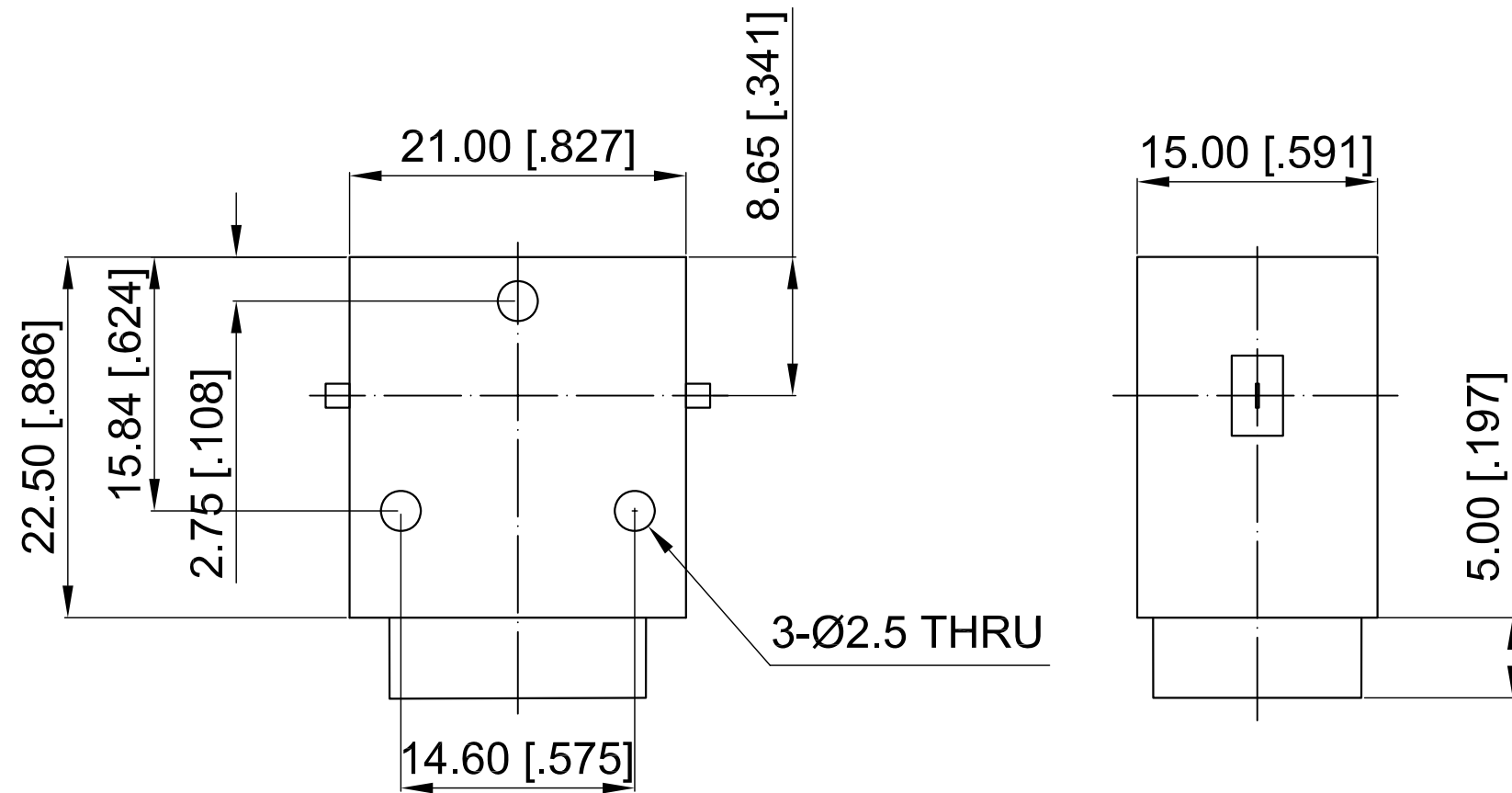
VSWR: 1.25 max.

Forward Power: 50 W

Reserve Power: 20 W

Direction: Clockwise

Revisions			
Rev	Description	Date	Approved:
A	Initial Release	2016.10.13	A. M




NOTES:

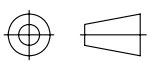
1. ALL SPECIFICATIONS ARE SUBJECT TO CHANGE WITHOUT NOTICE AT ANY TIME
2. CUSTOMER OUTLINE DRAWING FOR REFERENCE ONLY

Drawn:	W. Y 2016.10.13
Checked:	T. L 2016.10.13
Approved:	A. M 2016.10.13
Unless Otherwise Specified Dimensions are in Millimeters, Dimensions in [ ] are in Inches for Customer Reference Only. Unless Otherwise Specified Tolerance are:	
.XX ±0.13 [0.005"]	.X ±0.20 [0.008"] X ±0.50 [0.019"]
.X° ±1°	X° ±2°

Title:	Drop-in Isolator Freq 5.79-5.81 GHz
Part No:	DDI579581

**DEEWAVE** 

[www.deewave.com](http://www.deewave.com)

View: 

Size: A3	Scale: 2:1	Sheet: 1/1	Rev: A
----------	------------	------------	--------