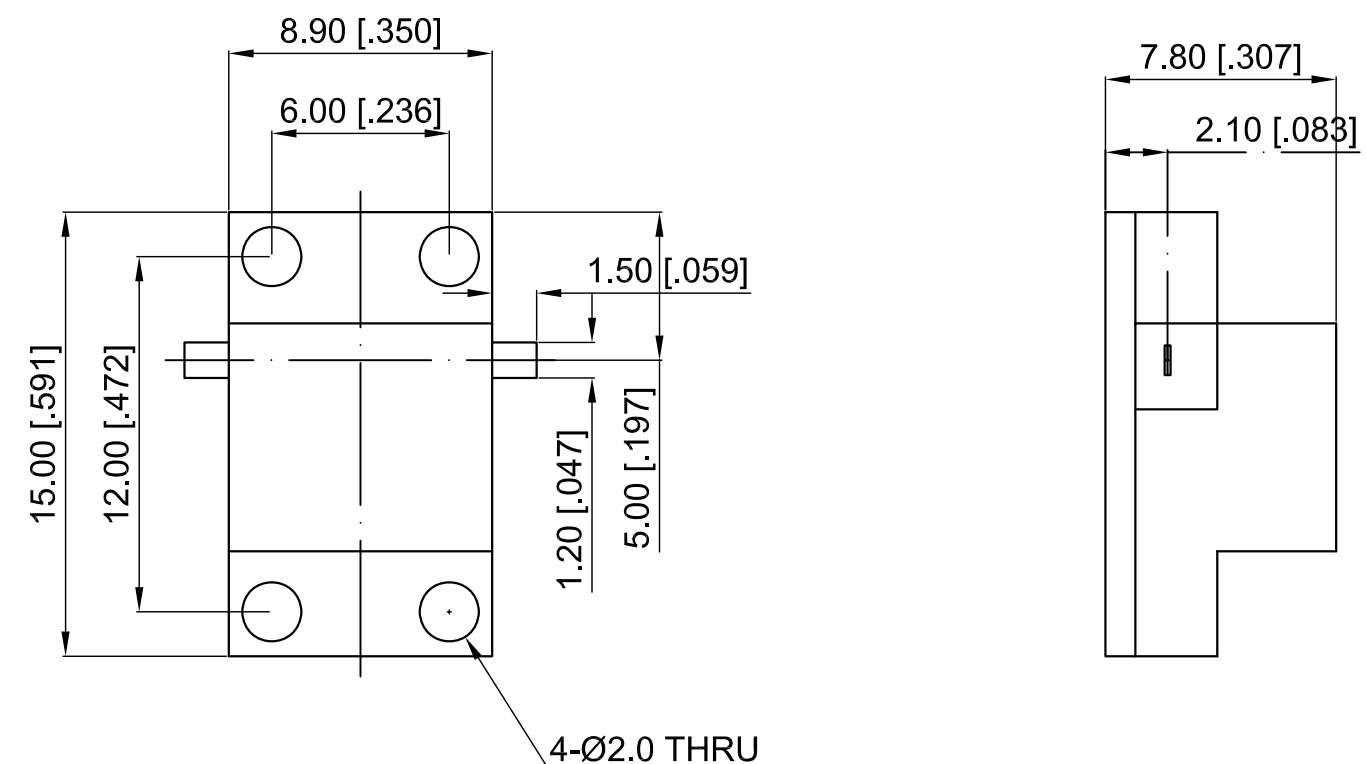


ELECTRICAL SPECIFICATIONS

Frequency Range: 6-8 GHz
 Impedance: 50 Ohm
 Insertion Loss: 0.6 dB max.
 Isolation: 18 dB min.
 VSWR: 1.35 max.
 Forward Power: 10 W
 Reserve Power: 5 W
 Direction: Clockwise

Revisions			
Rev	Description	Date	Approved:
A	Initial Release	2017.2.6	A. M




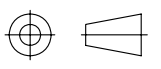
4-Ø2.0 THRU

NOTES:
 1. ALL SPECIFICATIONS ARE SUBJECT TO CHANGE WITHOUT NOTICE AT ANY TIME
 2. CUSTOMER OUTLINE DRAWING FOR REFERENCE ONLY

Drawn:	W. Y 2017.2.6
Checked:	T. L 2017.2.6
Approved:	A. M 2017.2.6
Unless Otherwise Specified Dimensions are in Millimeters, Dimensions in [] are in Inches for Customer Reference Only. Unless Otherwise Specified Tolerance are: .XX ±0.13 [.005"] .X ±0.20 [.008"] X ±0.50 [.019"] .X° ±1° X° ±2°	

Title:	Drop-in Isolator Freq 6-8 GHz
Part No:	DDI600800


www.deewave.com

View: 
 Size: A3 Scale: 4:1 Sheet: 1/1 Rev: A