

### Performance Features

Nominal Impedance: 50Ω

Frequency Range: DC-50 GHz

Durability: 500 Cycles

Operating Temperature: -55°C~+165°C

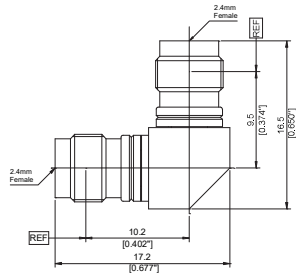
### Materials/Finishes

Housing: Type 303 Stainless Steel - Polished & Passivated

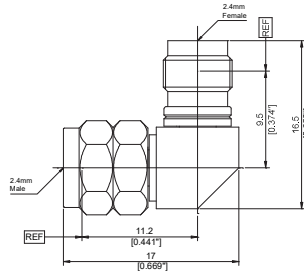
Center Contact: Beryllium Copper Plated Gold

Insulators: PEI

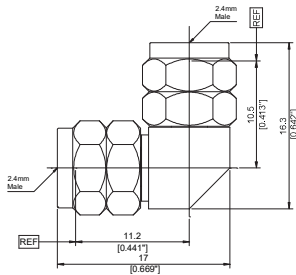
|        |                              |   |     |             |        |                              |       |          |      |             |
|--------|------------------------------|---|-----|-------------|--------|------------------------------|-------|----------|------|-------------|
|        |                              | <table border="1"> <tr><td>P/N</td><td>DPA22022001</td></tr> <tr><td>Descr.</td><td>2.4mm F to 2.4mm F</td></tr> <tr><td>Freq.</td><td>DC-50GHz</td></tr> <tr><td>VSWR</td><td>1.20:1(Max)</td></tr> </table>           | P/N | DPA22022001 | Descr. | 2.4mm F to 2.4mm F           | Freq. | DC-50GHz | VSWR | 1.20:1(Max) |
| P/N    | DPA22022001                  |   |     |             |        |                              |       |          |      |             |
| Descr. | 2.4mm F to 2.4mm F           |   |     |             |        |                              |       |          |      |             |
| Freq.  | DC-50GHz                     |   |     |             |        |                              |       |          |      |             |
| VSWR   | 1.20:1(Max)                  |   |     |             |        |                              |       |          |      |             |
|        |                              | <table border="1"> <tr><td>P/N</td><td>DPA22022102</td></tr> <tr><td>Descr.</td><td>2.4mm F to 2.4mm M</td></tr> <tr><td>Freq.</td><td>DC-50GHz</td></tr> <tr><td>VSWR</td><td>1.15:1(Max)</td></tr> </table>           | P/N | DPA22022102 | Descr. | 2.4mm F to 2.4mm M           | Freq. | DC-50GHz | VSWR | 1.15:1(Max) |
| P/N    | DPA22022102                  |   |     |             |        |                              |       |          |      |             |
| Descr. | 2.4mm F to 2.4mm M           |   |     |             |        |                              |       |          |      |             |
| Freq.  | DC-50GHz                     |   |     |             |        |                              |       |          |      |             |
| VSWR   | 1.15:1(Max)                  |   |     |             |        |                              |       |          |      |             |
|        |                              | <table border="1"> <tr><td>P/N</td><td>DPA22122103</td></tr> <tr><td>Descr.</td><td>2.4mm M to 2.4mm M</td></tr> <tr><td>Freq.</td><td>DC-50GHz</td></tr> <tr><td>VSWR</td><td>1.15:1(Max)</td></tr> </table>           | P/N | DPA22122103 | Descr. | 2.4mm M to 2.4mm M           | Freq. | DC-50GHz | VSWR | 1.15:1(Max) |
| P/N    | DPA22122103                  |   |     |             |        |                              |       |          |      |             |
| Descr. | 2.4mm M to 2.4mm M           |   |     |             |        |                              |       |          |      |             |
| Freq.  | DC-50GHz                     |   |     |             |        |                              |       |          |      |             |
| VSWR   | 1.15:1(Max)                  |   |     |             |        |                              |       |          |      |             |
|        |                              | <table border="1"> <tr><td>P/N</td><td>DPA22022004</td></tr> <tr><td>Descr.</td><td>2.4mm F to 2.4mm F, Flange</td></tr> <tr><td>Freq.</td><td>DC-50GHz</td></tr> <tr><td>VSWR</td><td>1.20:1(Max)</td></tr> </table>   | P/N | DPA22022004 | Descr. | 2.4mm F to 2.4mm F, Flange   | Freq. | DC-50GHz | VSWR | 1.20:1(Max) |
| P/N    | DPA22022004                  |   |     |             |        |                              |       |          |      |             |
| Descr. | 2.4mm F to 2.4mm F, Flange   |   |     |             |        |                              |       |          |      |             |
| Freq.  | DC-50GHz                     |   |     |             |        |                              |       |          |      |             |
| VSWR   | 1.20:1(Max)                  |   |     |             |        |                              |       |          |      |             |
|        |                              | <table border="1"> <tr><td>P/N</td><td>DPA22022005</td></tr> <tr><td>Descr.</td><td>2.4mm F to 2.4mm F, Bulkhead</td></tr> <tr><td>Freq.</td><td>DC-50GHz</td></tr> <tr><td>VSWR</td><td>1.20:1(Max)</td></tr> </table> | P/N | DPA22022005 | Descr. | 2.4mm F to 2.4mm F, Bulkhead | Freq. | DC-50GHz | VSWR | 1.20:1(Max) |
| P/N    | DPA22022005                  |   |     |             |        |                              |       |          |      |             |
| Descr. | 2.4mm F to 2.4mm F, Bulkhead |   |     |             |        |                              |       |          |      |             |
| Freq.  | DC-50GHz                     |   |     |             |        |                              |       |          |      |             |
| VSWR   | 1.20:1(Max)                  |   |     |             |        |                              |       |          |      |             |



|        |                       |
|--------|-----------------------|
| P/N    | DPA22022006           |
| Descr. | 2.4mm F RA to 2.4mm F |
| Freq.  | DC-50GHz              |
| VSWR   | 1.40:1(Max)           |



|        |                       |
|--------|-----------------------|
| P/N    | DPA22022107           |
| Descr. | 2.4mm F RA to 2.4mm M |
| Freq.  | DC-50GHz              |
| VSWR   | 1.40:1(Max)           |



|        |                       |
|--------|-----------------------|
| P/N    | DPA22122108           |
| Descr. | 2.4mm M RA to 2.4mm M |
| Freq.  | DC-50GHz              |
| VSWR   | 1.40:1(Max)           |