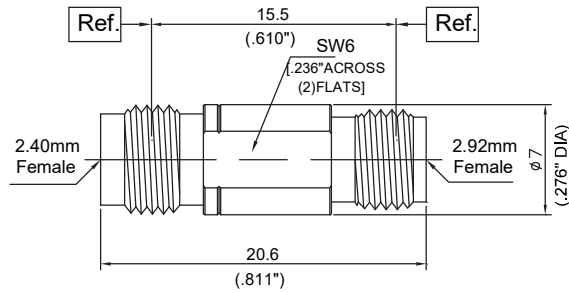


## Performance Features

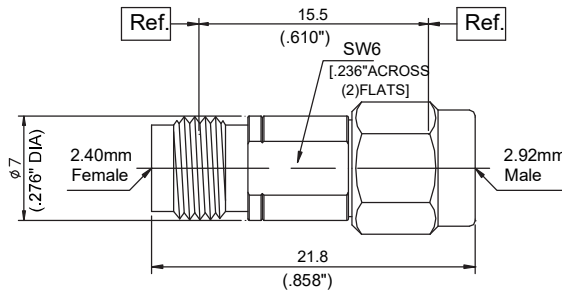
- Nominal Impedance: 50Ω
- Frequency Range: DC-40 GHz
- Durability: 500 Cycles
- Operating Temperature: -55°C~+165°C

## Materials/Finishes

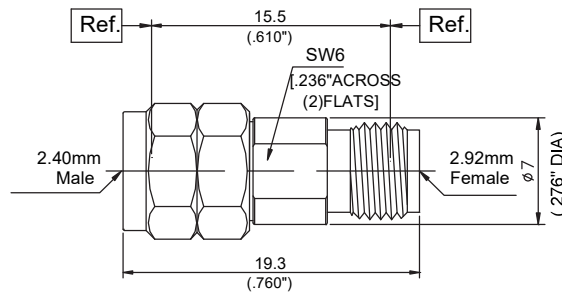
- Housing: Type 303 Stainless Steel - Polished & Passivated
- Center Contact: Beryllium Copper Plated Gold
- Insulators: PEI



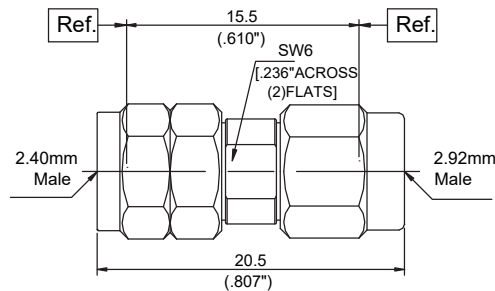
P/N	DPA23022001
Descr.	2.92mm F to 2.4mm F
Freq.	DC-40GHz
VSWR	1.20:1(Max)



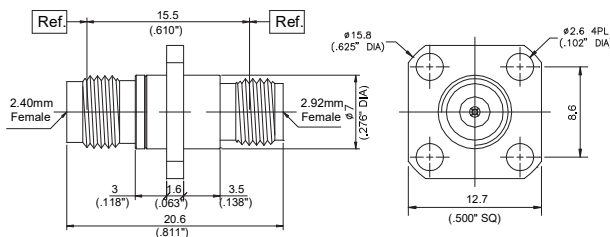
P/N	DPA23122002
Descr.	2.92mm M to 2.4mm F
Freq.	DC-40GHz
VSWR	1.15:1(Max)



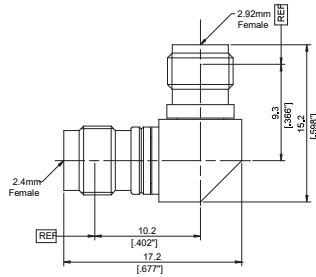
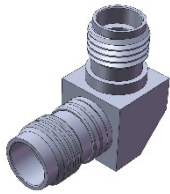
P/N	DPA23022103
Descr.	2.92mm F to 2.4mm M
Freq.	DC-40GHz
VSWR	1.15:1(Max)



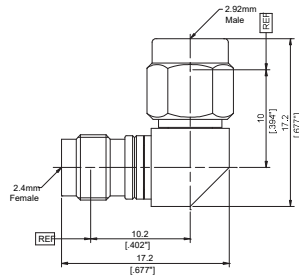
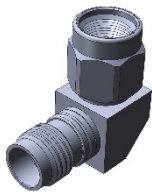
P/N	DPA23122104
Descr.	2.92mm M to 2.4mm M
Freq.	DC-40GHz
VSWR	1.15:1(Max)



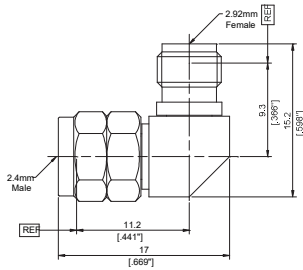
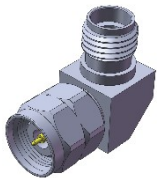
P/N	DPA23022005
Descr.	2.92mm F to 2.4mm F, Flange
Freq.	DC-40GHz
VSWR	1.20:1(Max)



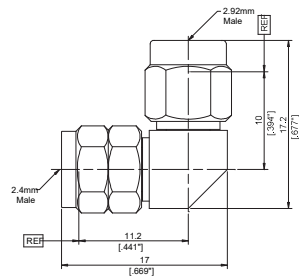
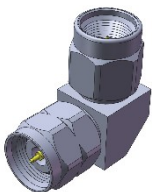
P/N	DPA23022006
Descr.	2.92mm F RA to 2.4mm F
Freq.	DC-40GHz
VSWR	1.25:1(Max)



P/N	DPA23122007
Descr.	2.92mm M RA to 2.4mm F
Freq.	DC-40GHz
VSWR	1.25:1(Max)



P/N	DPA23022108
Descr.	2.92mm F RA to 2.4mm M
Freq.	DC-40GHz
VSWR	1.25:1(Max)



P/N	DPA23122109
Descr.	2.92mm M RA to 2.4mm M
Freq.	DC-40GHz
VSWR	1.25:1(Max)