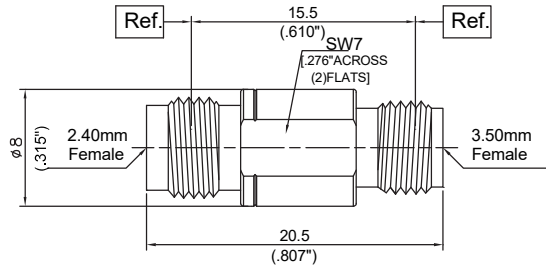


Performance Features

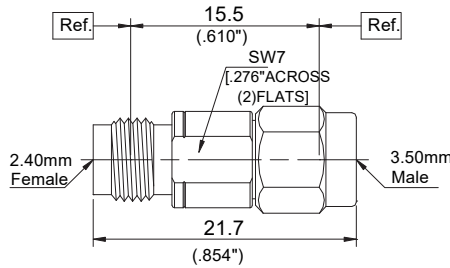
Nominal Impedance: 50Ω
Frequency Range: DC-33 GHz
Durability: 500 Cycles
Operating Temperature: -55°C~+165°C

Materials/Finishes

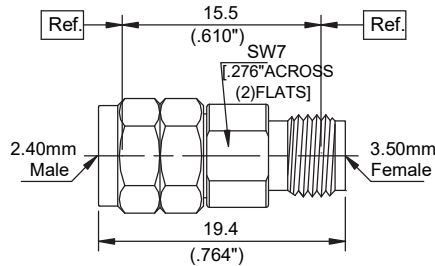
Housing: Type 303 Stainless Steel - Polished & Passivated
Center Contact: Beryllium Copper Plated Gold
Insulators: PEI



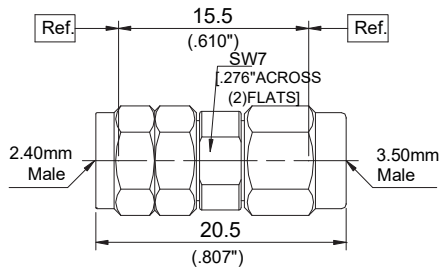
P/N	DPA24022001
Descr.	3.5mm F to 2.4mm F
Freq.	DC-33GHz
VSWR	1.15:1(Max)



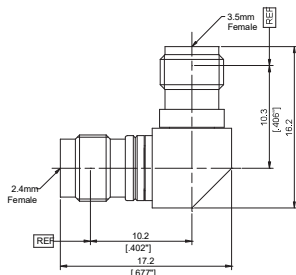
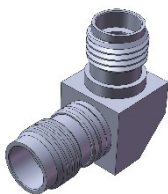
P/N	DPA24122002
Descr.	3.5mm M to 2.4mm F
Freq.	DC-33GHz
VSWR	1.15:1(Max)



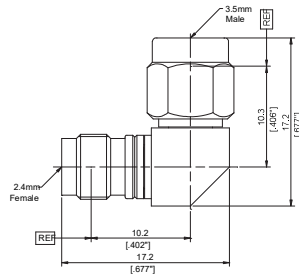
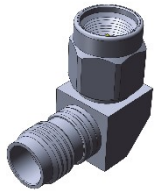
P/N	DPA24022103
Descr.	3.5mm F to 2.4mm M
Freq.	DC-33GHz
VSWR	1.15:1(Max)



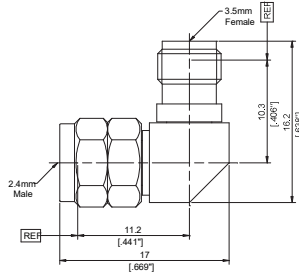
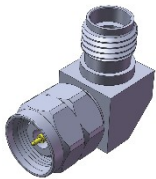
P/N	DPA24122104
Descr.	3.5mm M to 2.4mm M
Freq.	DC-33GHz
VSWR	1.15:1(Max)



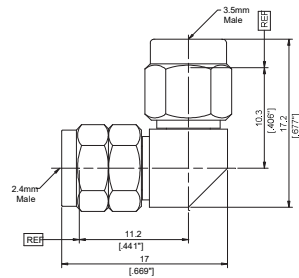
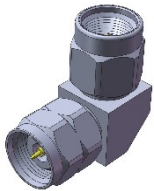
P/N	DPA24022005
Descr.	3.5mm F RA to 2.4mm F
Freq.	DC-33GHz
VSWR	1.25:1(Max)



P/N	DPA24122006
Descr.	3.5mm M RA to 2.4mm F
Freq.	DC-33GHz
VSWR	1.25:1(Max)



P/N	DPA24022107
Descr.	3.5mm F RA to 2.4mm M
Freq.	DC-33GHz
VSWR	1.25:1(Max)



P/N	DPA24122108
Descr.	3.5mm M RA to 2.4mm M
Freq.	DC-33GHz
VSWR	1.25:1(Max)