

Performance Features

Nominal Impedance: 50Ω

Durability: 500 Cycles

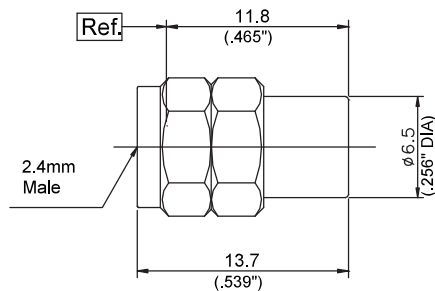
Operating Temperature: -55°C~+125°C

Materials/Finishes

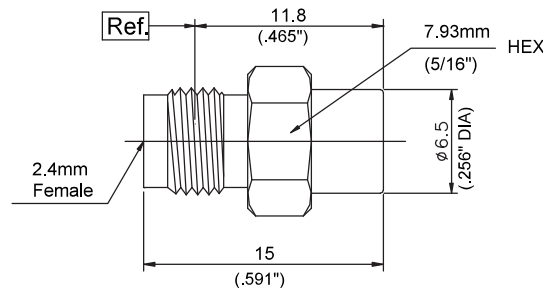
Housing: Type 303 Stainless Steel - Polished & Passivated

Center Contact: Beryllium Copper Plated Gold

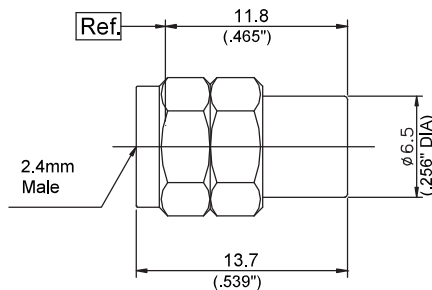
Insulators: PEI/PTFE



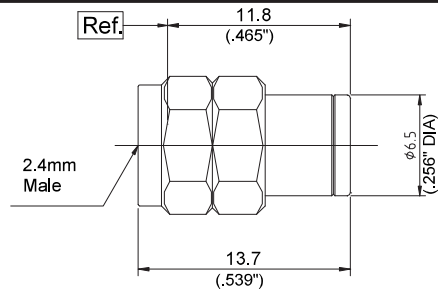
P/N	DPT221-40-0.5
Descr.	2.4mm Male Termination
Freq.	DC-40GHz
VSWR	1.25:1(Max)
Power	0.5W



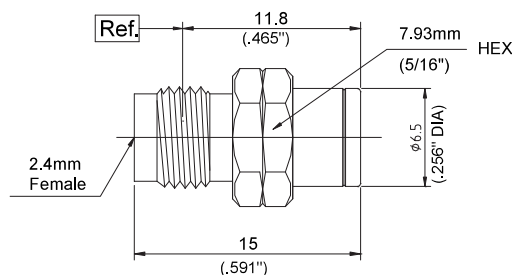
P/N	DPT220-40-0.5
Descr.	2.4mm Female Termination
Freq.	DC-40GHz
VSWR	1.25:1(Max)
Power	0.5W



P/N	DPT221-50-0.5
Descr.	2.4mm Male Termination
Freq.	DC-50GHz
VSWR	1.35:1(Max)
Power	0.5W



P/N	DPT221-40-1
Descr.	2.4mm Male Termination
Freq.	DC-40GHz
VSWR	1.30:1(Max)
Power	1W



P/N	DPT220-40-1
Descr.	2.4mm Female Termination
Freq.	DC-40GHz
VSWR	1.30:1(Max)
Power	1W

Performance Features

Nominal Impedance: 50Ω

Durability: 500 Cycles

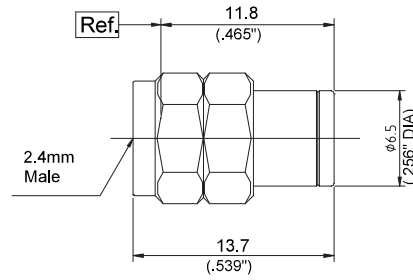
Operating Temperature: -55°C~+125°C

Materials/Finishes

Housing: Type 303 Stainless Steel - Polished & Passivated

Center Contact: Beryllium Copper Plated Gold

Insulators: PEI/PTFE



P/N	DPT221-50-1
Descr.	2.4mm Male Termination
Freq.	DC-50GHz
VSWR	1.35:1(Max)
Power	1W