

## Performance Features

Nominal Impedance: 50Ω

Durability: 500 Cycles

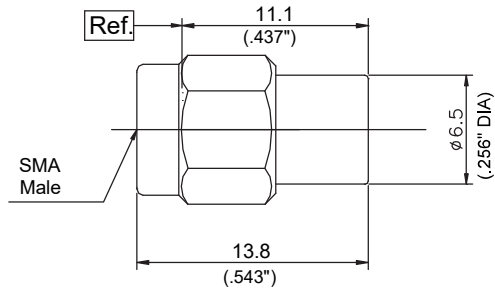
Operating Temperature: -55°C~+125°C

## Materials/Finishes

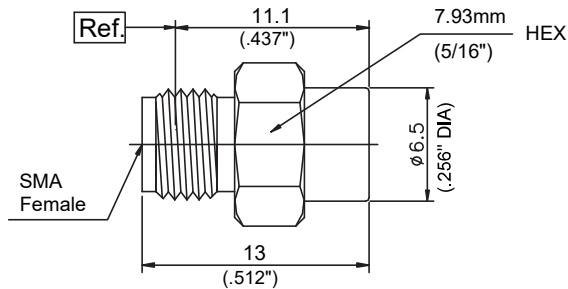
Housing: Type 303 Stainless Steel - Polished & Passivated

Center Contact: Beryllium Copper Plated Gold

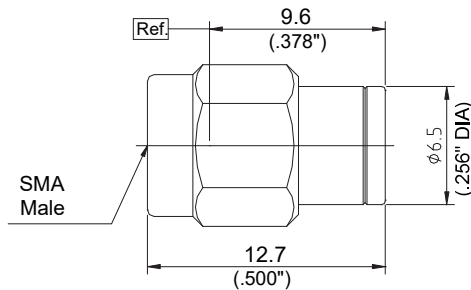
Insulators: PEI/PTFE



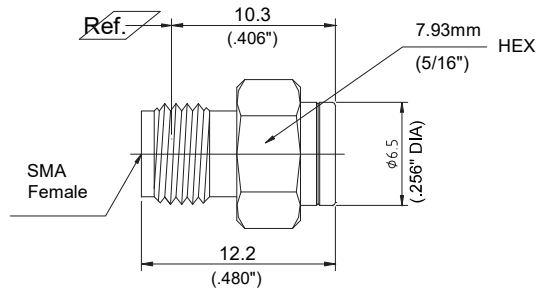
P/N	DPT251-18-1
Descr.	SMA Male Termination
Freq.	DC-18GHz
VSWR	1.15:1(Max)
Power	1W



P/N	DPT250-18-1
Descr.	SMA Female Termination
Freq.	DC-18GHz
VSWR	1.15:1(Max)
Power	1W



P/N	DPT251-18-2
Descr.	SMA Male Termination
Freq.	DC-18GHz
VSWR	1.20:1(Max)
Power	2W



P/N	DPT250-18-2
Descr.	SMA Female Termination
Freq.	DC-18GHz
VSWR	1.20:1(Max)
Power	2W