

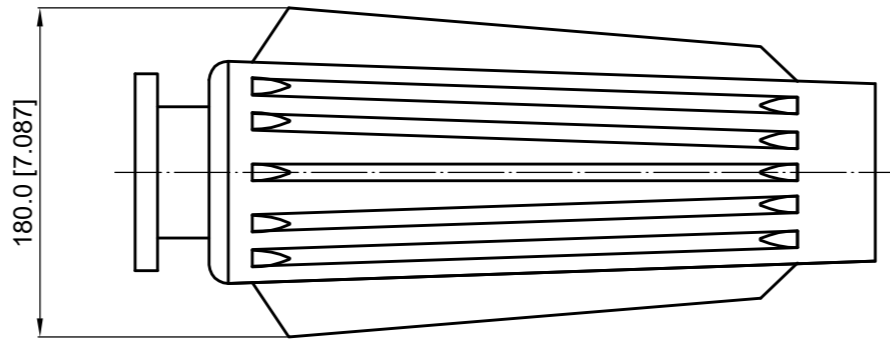
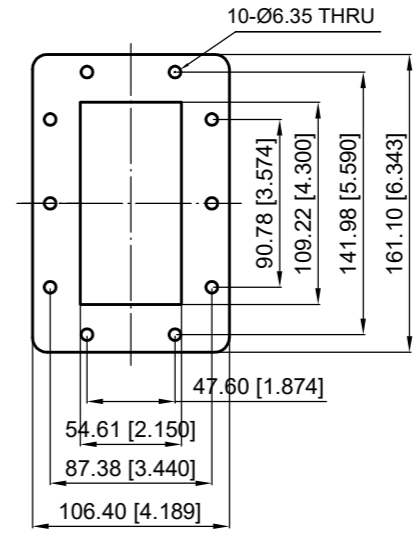
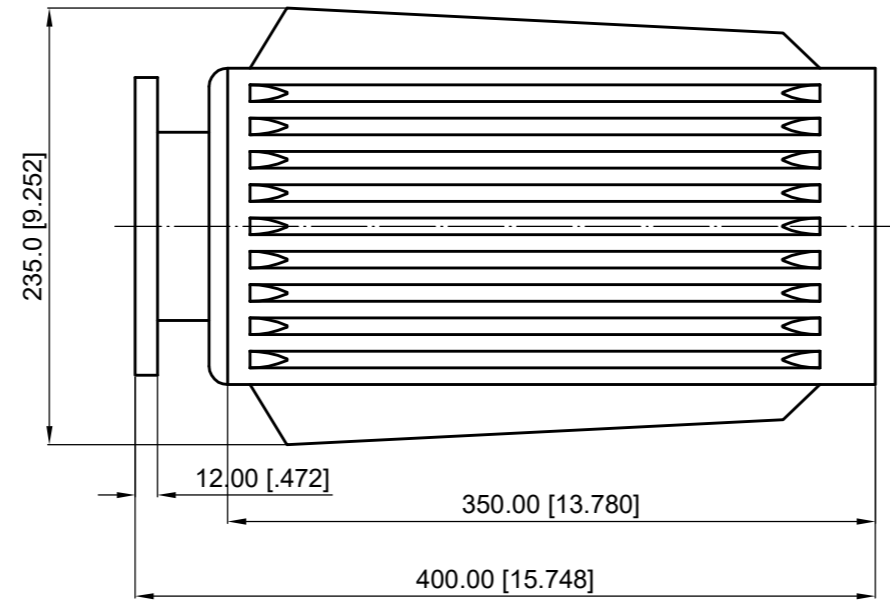
Revisions			
Rev	Description	Date	Approved:
A	Initial Release	2023.6.9	A. M

ELECTRICAL PERFORMANCE

1. Frequency Range: 1.7-2.6 GHz
2. VSWR: 1.20 max.
3. Load Power: 3000 W
4. WG Type: WR430 (UBR22)

MATERIAL

1. Body: Aluminium



NOTES:

1. ALL SPECIFICATIONS ARE SUBJECT TO CHANGE WITHOUT NOTICE AT ANY TIME
2. CUSTOMER OUTLINE DRAWING FOR REFERENCE ONLY

Drawn:	W. Y 2023.6.9
Checked:	T. L 2023.6.9
Approved:	A. M 2023.6.9
Unless Otherwise Specified Dimensions are in Millimeters, Dimensions in [] are in Inches for Customer Reference Only. Unless Otherwise Specified Tolerance are: .XX ±0.13 [.005"] .X ±0.20 [.008"] X ±0.50 [.019"] .X° ±1° X° ±2°	

Title:	WR430(UBR22) High Power Load, Power 3000W
Part No:	DWL430D1-3000



View:	
Size:	A3
Scale:	1:2
Sheet:	1/1
Rev:	A