

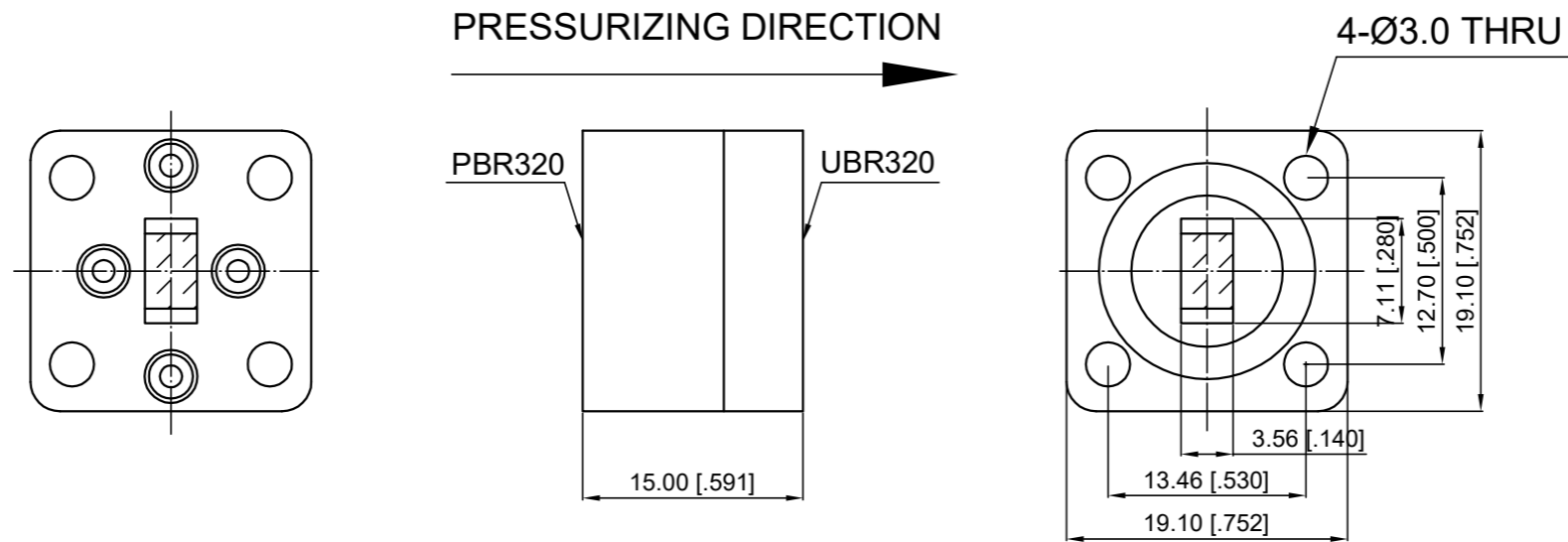
Revisions			
Rev	Description	Date	Approved:
A	Initial Release	2021.10.8	A. M

### ELECTRICAL PERFORMANCE

1. Frequency Range: 26.5-40 GHz
2. VSWR: 1.25 Max.
3. Insertion Loss: 0.3 dB max.
4. Average Power: 100 W
5. Peak Power: 10 KW
6. Pressure: 0.2 MPa (29 PSI) Max.

### MATERIAL

1. Body: Brass, Ag Plated
2. Paint: Gray



#### NOTES:

1. ALL SPECIFICATIONS ARE SUBJECT TO CHANGE WITHOUT NOTICE AT ANY TIME
2. CUSTOMER OUTLINE DRAWING FOR REFERENCE ONLY

Drawn:	W. Y 2021.10.8
Checked:	T. L 2021.10.8
Approved:	A. M 2021.10.8
Unless Otherwise Specified Dimensions are in Millimeters, Dimensions in [ ] are in Inches for Customer Reference Only. Unless Otherwise Specified Tolerance are: .XX ±0.13 [0.005"] .X ±0.20 [0.008"] X ±0.50 [0.019"] .X° ±1° X° ±2°	

Title:	WR28 Pressure Window Freq 26.5-40 GHz
Part No:	DWPW28

**DEEWAVE**  
www.deewave.com

View:

Size: A3	Scale: 2:1	Sheet: 1/1	Rev: A
----------	------------	------------	--------