

Revisions

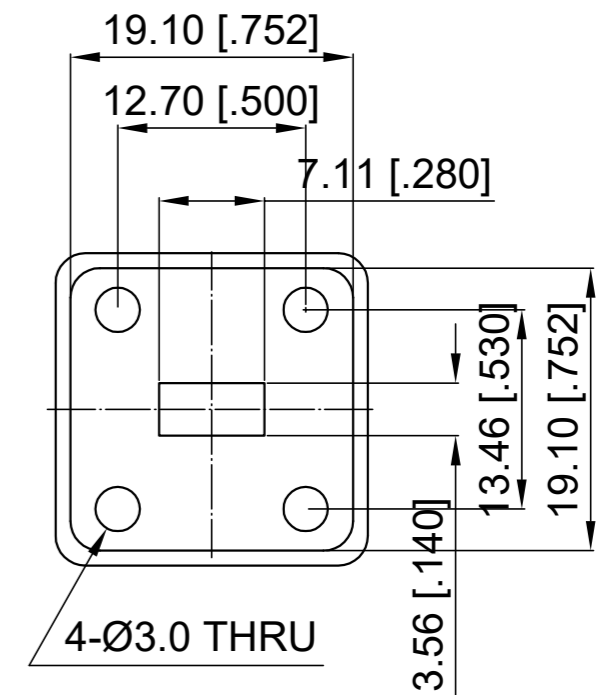
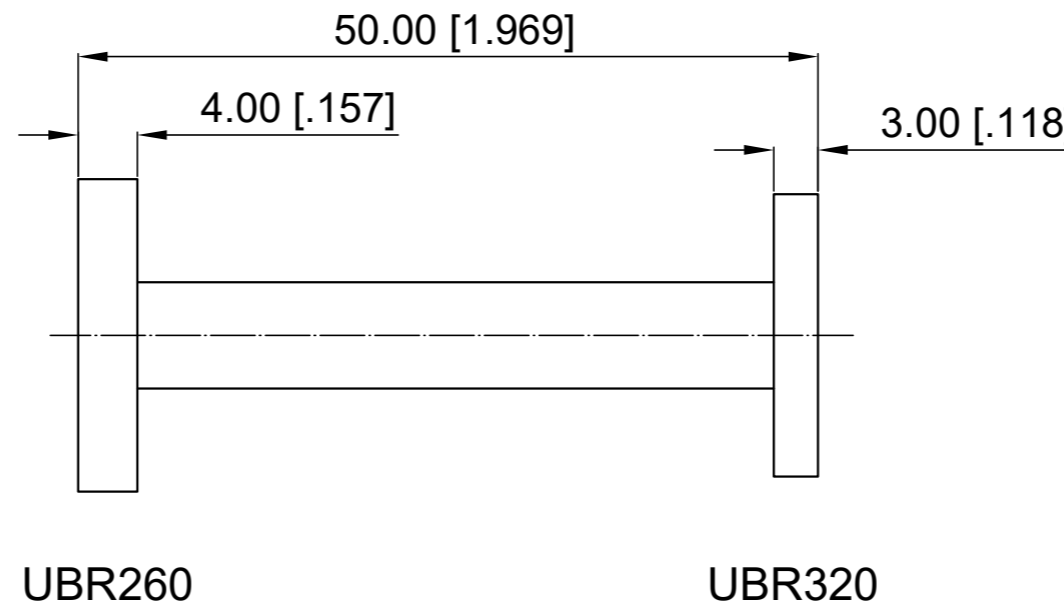
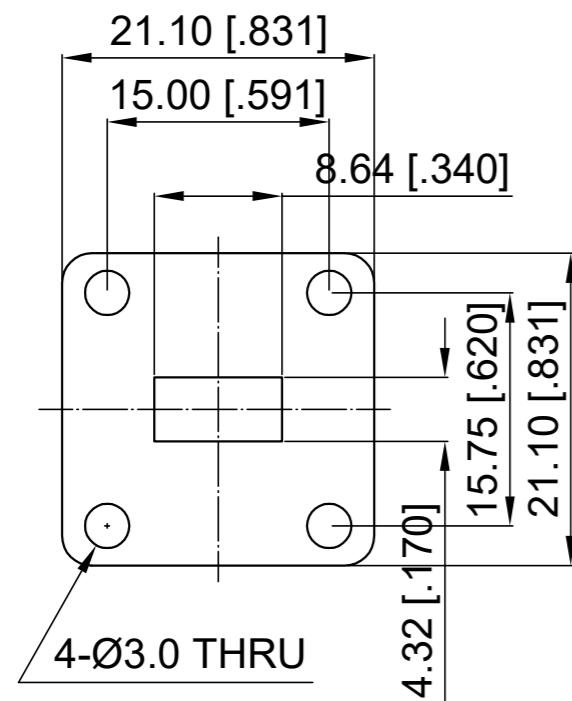
Rev	Description	Date	Approved:
A	Initial Release	2021.7.21	A. M

ELECTRICAL PERFORMANCE

- 1. Frequency Range: 26.5-33 GHz
- 2. VSWR: 1.10 max.
- 3. Port 1: WR34 (UBR260)
- 4. Port 2: WR28 (UBR320)

MATERIAL

- 1. Body: Brass plated Ag
- 2. Paint: Gray



UBR260

UBR320

NOTES:

- 1. ALL SPECIFICATIONS ARE SUBJECT TO CHANGE WITHOUT NOTICE AT ANY TIME
- 2. CUSTOMER OUTLINE DRAWING FOR REFERENCE ONLY

Drawn:	W. Y 2021.7.21
Checked:	T. L 2021.7.21
Approved:	A. M 2021.7.21
Unless Otherwise Specified Dimensions are in Millimeters, Dimensions in [] are in Inches for Customer Reference Only. Unless Otherwise Specified Tolerance are: .XX ±0.13 [.005"] .X ±0.20 [.008"] X ±0.50 [.019"] .X° ±1° X° ±2°	

Title:	WR34 to WR28 Waveguide Transition, 50mm Length
Part No:	DWT34-28-50

DEEWAVE
www.deewave.com

View:

Size: A3	Scale: 1:1	Sheet: 1/1	Rev: A
----------	------------	------------	--------