

**ELECTRICAL SPECIFICATIONS**

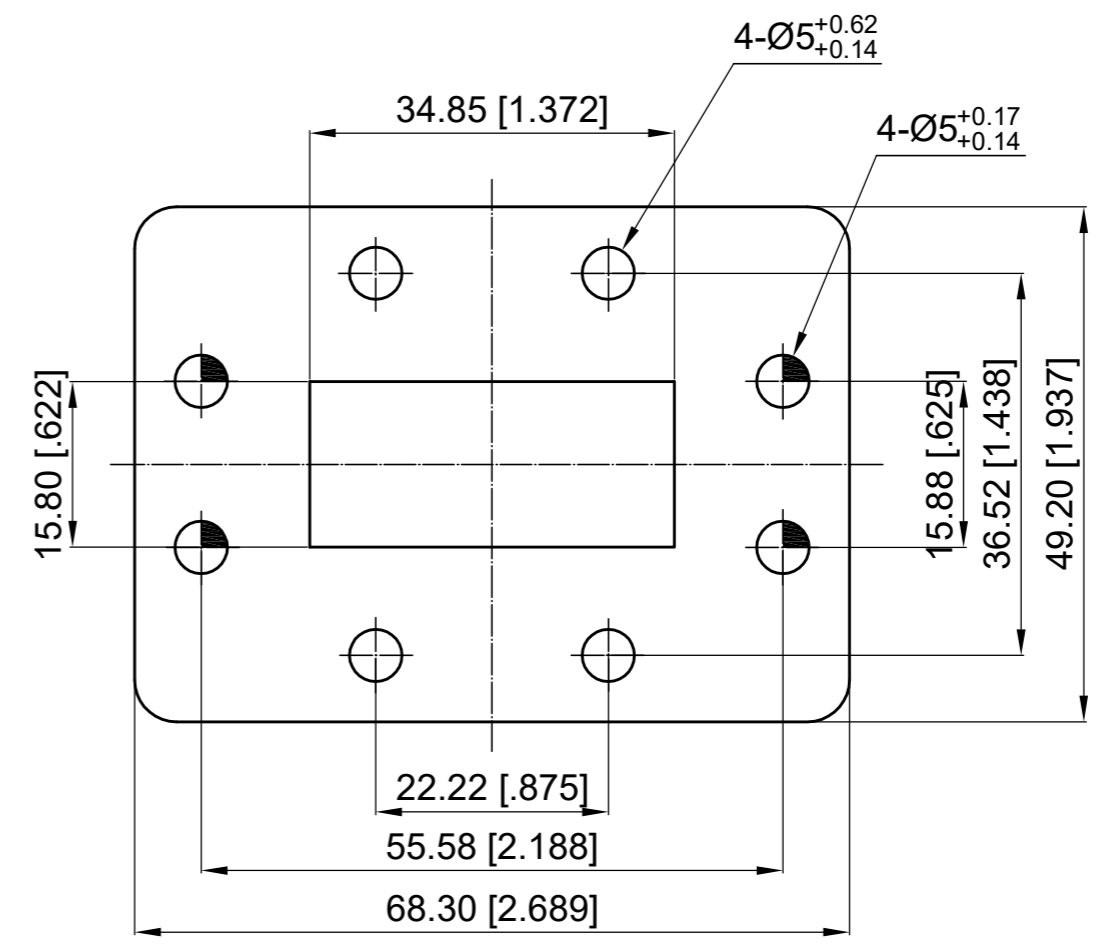
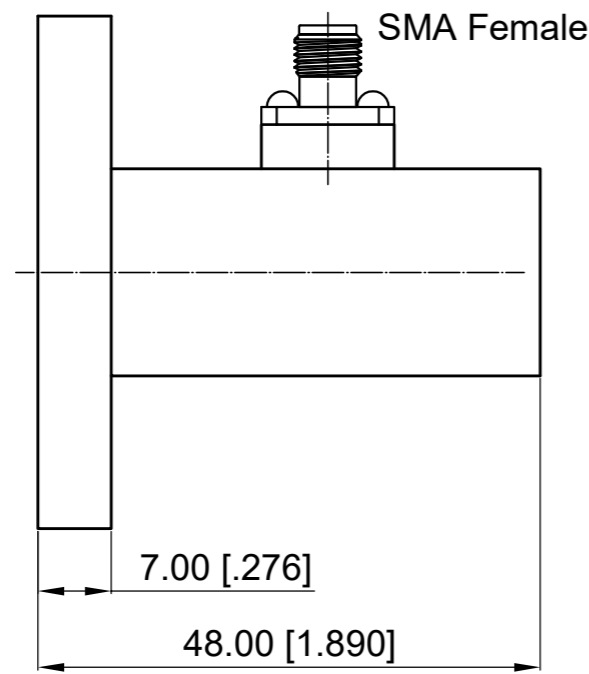
Frequency Range: 5.38-8.17 GHz

VSWR: 1.25 max.

**MATERIAL**

Waveguide Body: Alumium

Revisions			
Rev	Description	Date	Approved:
A	Initial Release	2017.5.25	A. M



- NOTES:
1. ALL SPECIFICATIONS ARE SUBJECT TO CHANGE WITHOUT NOTICE AT ANY TIME
  2. CUSTOMER OUTLINE DRAWING FOR REFERENCE ONLY

Drawn: W. Y 2017.5.25	Title: <b>WR137 (UDR70) Right Angle to SMA Female Adaptor, Freq 5.38-8.17 GHz</b>	 <a href="http://www.deewave.com">www.deewave.com</a>			
Checked: T. L 2017.5.25					
Approved: A. M 2017.5.25					
Unless Otherwise Specified Dimensions are in Millimeters, Dimensions in [ ] are in Inches for Customer Reference Only. Unless Otherwise Specified Tolerance are: .XX ±0.13 [.005"] .X ±0.20 [.008"] X ±0.50 [.019"] .X° ±1° X° ±2°		Part No: <b>DWCA137D1SFL</b>	View: 		
		Size: A3	Scale: 1:1	Sheet: 1/1	Rev: A