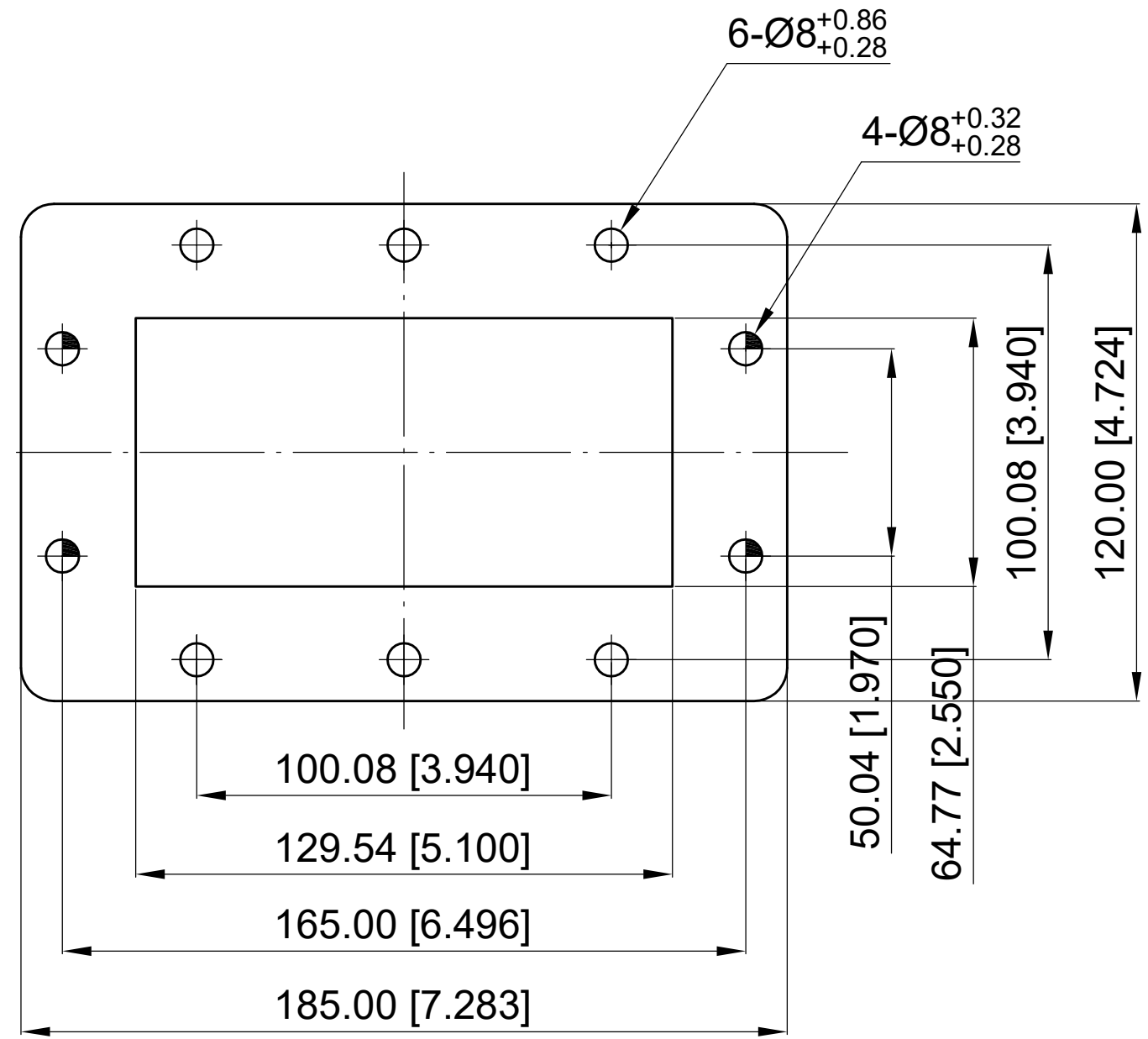
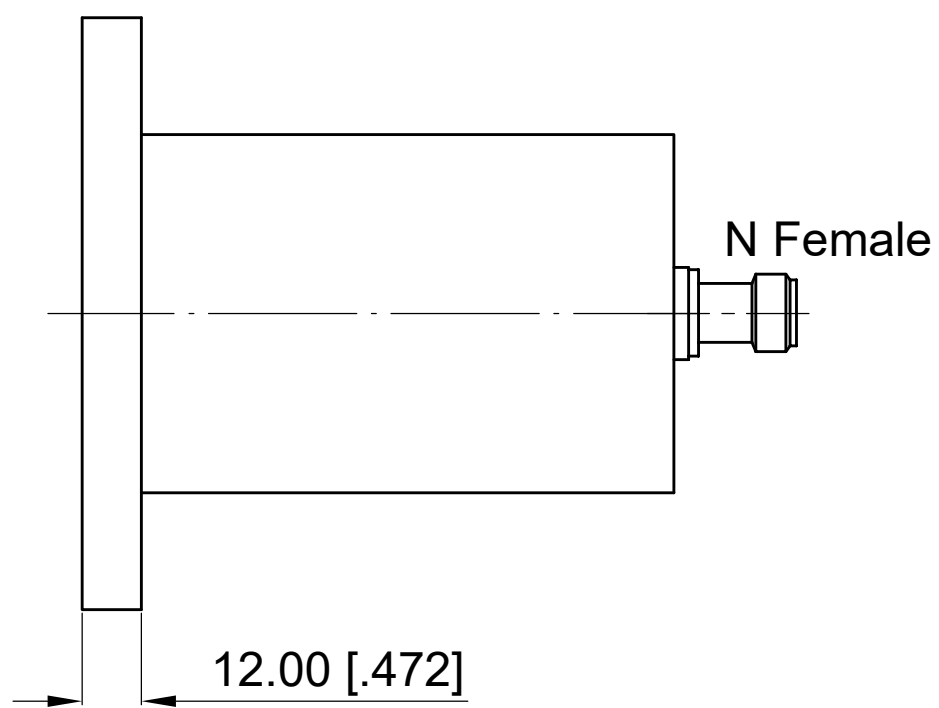


6 5 4 3 2 1

Revisions			
Rev	Description	Date	Approved:
A	Initial Release	2021.7.7	A. M

ELECTRICAL PERFORMANCE
 Frequency Range: 1.45-2.2 GHz
 VSWR: 1.25 max.

MATERIAL
 Body: Alumium



NOTES:
 1. ALL SPECIFICATIONS ARE SUBJECT TO CHANGE WITHOUT NOTICE AT ANY TIME
 2. CUSTOMER OUTLINE DRAWING FOR REFERENCE ONLY

Drawn:	W. Y 2021.7.7
Checked:	T. L 2021.7.7
Approved:	A. M 2021.7.7
Unless Otherwise Specified Dimensions are in Millimeters, Dimensions in [] are in Inches for Customer Reference Only. Unless Otherwise Specified Tolerance are: .XX ±0.13 [.005"] .X ±0.20 [.008"] X ±0.50 [.019"] .X° ±1° X° ±2°	

Title:	WR510 (UDR18) End Launch to N Female Adaptor, Freq 1.45-2.2 GHz
Part No:	DWCA510D1NF

DEEWAVE
www.deewave.com

View:

Size:	Scale:	Sheet:	Rev:
A3	1:1.5	1/1	A

6 5 4 3 2 1