

6

5

4

3

2

1

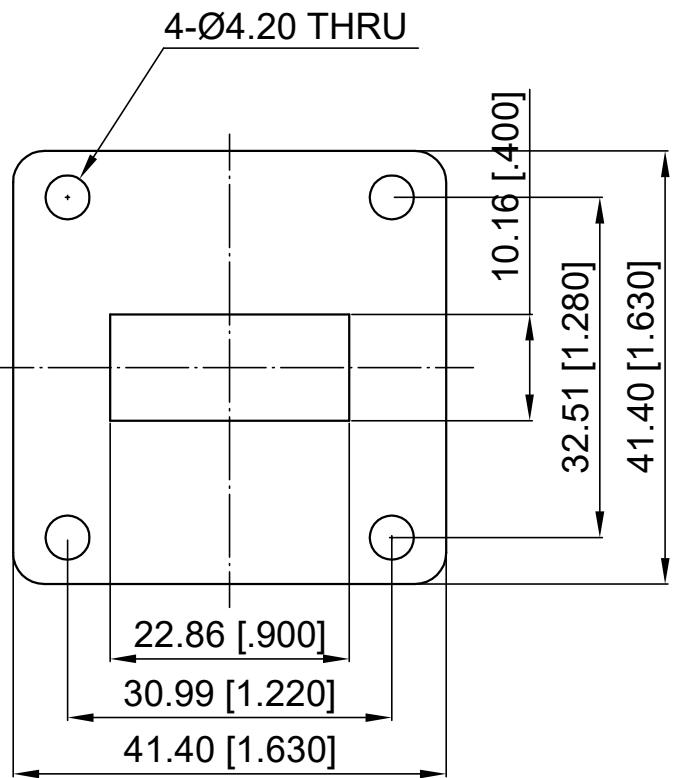
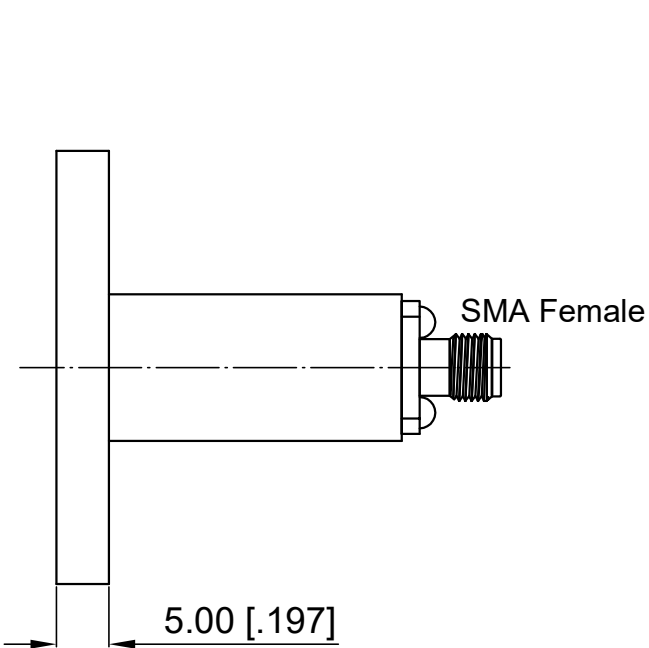
Revisions			
Rev	Description	Date	Approved:
A	Initial Release	2015.2.2	A. M

ELECTRICAL SPECIFICATIONS

Frequency Range: 8.2-12.4 GHz
VSWR: 1.25 max.

MATERIAL

Waveguide Body: Brass, Ag Plated
Paint: Gray




A

NOTES:

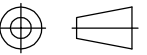
- 1. ALL SPECIFICATIONS ARE SUBJECT TO CHANGE WITHOUT NOTICE AT ANY TIME
- 2. CUSTOMER OUTLINE DRAWING FOR REFERENCE ONLY

Drawn:	W. Y 2015.2.2
Checked:	T. L 2015.2.2
Approved:	A. M 2015.2.2
Unless Otherwise Specified Dimensions are in Millimeters, Dimensions in [] are in Inches for Customer Reference Only. Unless Otherwise Specified Tolerance are: .XX ±0.13 [0.005"] .X ±0.20 [0.008"] X ±0.50 [0.019"] .X° ±1° X° ±2°	

Title:	WR90 (UBR100) End Launch to SMA Female Adaptor, Freq 8.2-12.4 GHz
Part No:	DWCA90SF

DEEWAVE 

www.deewave.com

View: 

Size: A3	Scale: 1:1	Sheet: 1/1	Rev: A
----------	------------	------------	--------

6

5

4

3

2

1