

**ELECTRICAL SPECIFICATIONS**

Frequency Range: 14.5-16.5 GHz

Impedance: 50 Ohm

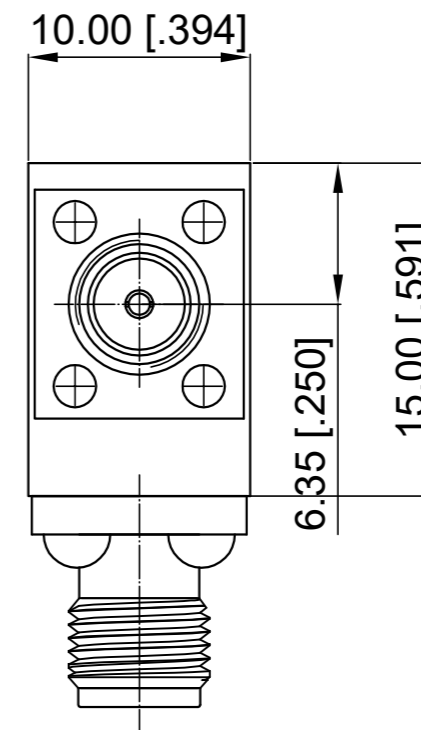
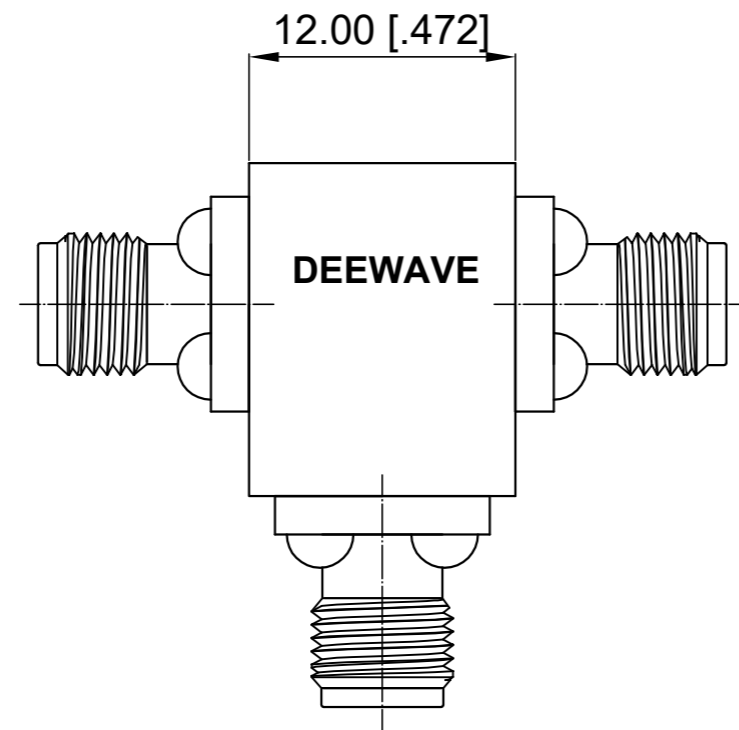
Insertion Loss: 0.40 dB max.

Isolation: 18 dB min.

VSWR: 1.30 max.

Direction: Clockwise

Revisions			
Rev	Description	Date	Approved:
A	Initial Release	2017.11.17	A. M



**NOTES:**

1. ALL SPECIFICATIONS ARE SUBJECT TO CHANGE WITHOUT NOTICE AT ANY TIME
2. CUSTOMER OUTLINE DRAWING FOR REFERENCE ONLY

Drawn:	W. Y 2017.11.17
Checked:	T. L 2017.11.17
Approved:	A. M 2017.11.17
Unless Otherwise Specified Dimensions are in Millimeters, Dimensions in [ ] are in Inches for Customer Reference Only. Unless Otherwise Specified Tolerance are: .XX ±0.13 [.005"] .X ±0.20 [.008"] X ±0.50 [.019"] .X° ±1° X° ±2°	

Title:	SMA Female Circulator Freq 14.5-16.5 GHz
Part No:	DCC14501650

**DEEWAVE**  
www.deewave.com

View:

Size:	Scale:	Sheet:	Rev:
A3	3:1	1/1	A