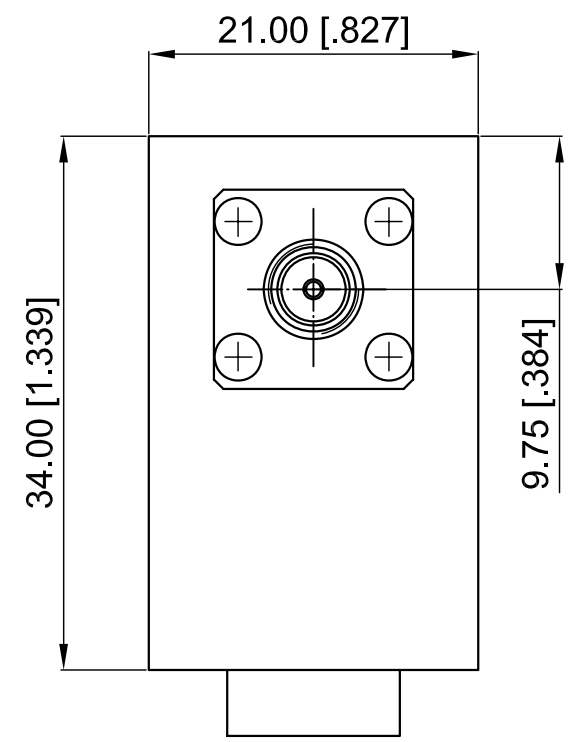
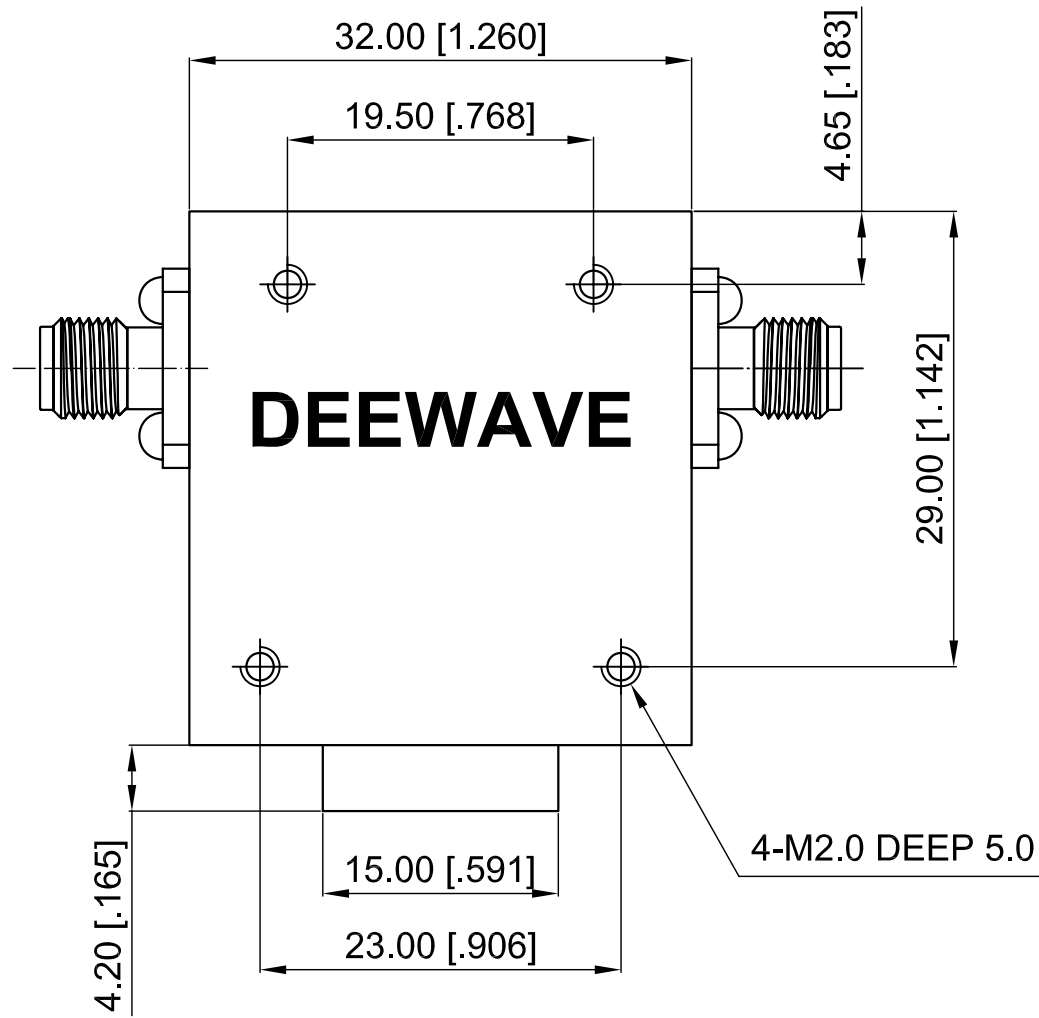


**ELECTRICAL SPECIFICATIONS**

Frequency Range: 2.3-3.3 GHz  
 Impedance: 50 Ohm  
 Insertion Loss: 0.5 dB max.  
 Isolation: 18 dB min.  
 VSWR: 1.30 max.  
 Forward Power: 50 W  
 Reserve Power: 20 W

Revisions			
Rev	Description	Date	Approved:
A	Initial Release	2017.5.4	A. M



NOTES:  
 1. ALL SPECIFICATIONS ARE SUBJECT TO CHANGE WITHOUT NOTICE AT ANY TIME  
 2. CUSTOMER OUTLINE DRAWING FOR REFERENCE ONLY

Drawn:	W. Y 2017.5.4
Checked:	T. L 2017.5.4
Approved:	A. M 2017.5.4
Unless Otherwise Specified Dimensions are in Millimeters, Dimensions in [ ] are in Inches for Customer Reference Only. Unless Otherwise Specified Tolerance are: .XX ±0.13 [.005"] .X ±0.20 [.008"] X ±0.50 [.019"] .X° ±1° X° ±2°	

Title:	SMA Female Isolator Freq 2.3-3.3 GHz
Part No:	DCI230330



View:	
Size:	A3
Scale:	4:1
Sheet:	1/1
Rev:	A