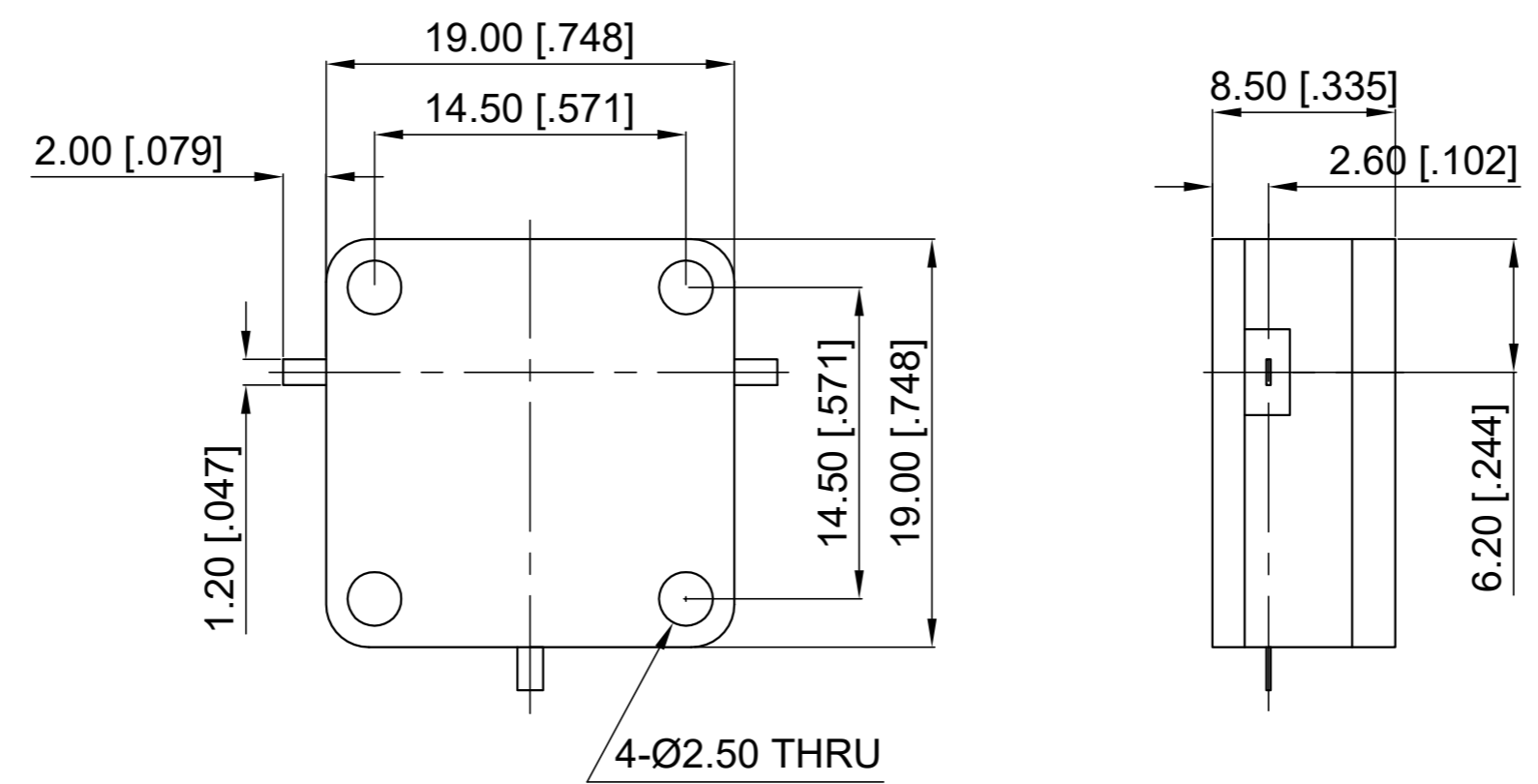


Revisions			
Rev	Description	Date	Approved:
A	Initial Release	2019.6.10	A. M
B	Power updated to 100W	2020.1.21	A. M

ELECTRICAL SPECIFICATIONS
 Frequency Range: 1710-2180 MHz
 Insertion Loss: 0.4 dB max.
 Isolation: 18 dB min.
 VSWR: 1.30 max.
 Forward Power: 100 W
 Direction: Clockwise



Drawn:	W. Y 2020.1.21
Checked:	T. L 2020.1.21
Approved:	A. M 2020.1.21
Unless Otherwise Specified Dimensions are in Millimeters, Dimensions in [] are in Inches for Customer Reference Only. Unless Otherwise Specified Tolerance are: .XX ±0.13 [.005"] .X ±0.20 [.008"] X ±0.50 [.019"] .X° ±1° X° ±2°	

Title:
Drop-in Circulator
Freq 1710-2180 MHz

Part No:
DDC171218

DEEWAVE
www.deewave.com

View:

Size: A3	Scale: 3:1	Sheet: 1/1	Rev: B
-------------	---------------	---------------	-----------

NOTES:
 1. ALL SPECIFICATIONS ARE SUBJECT TO CHANGE WITHOUT NOTICE AT ANY TIME
 2. CUSTOMER OUTLINE DRAWING FOR REFERENCE ONLY