

# ELECTRICAL SPECIFICATIONS

Frequency Range: 2300-2700 MHz

Insertion Loss: 0.4 dB max.

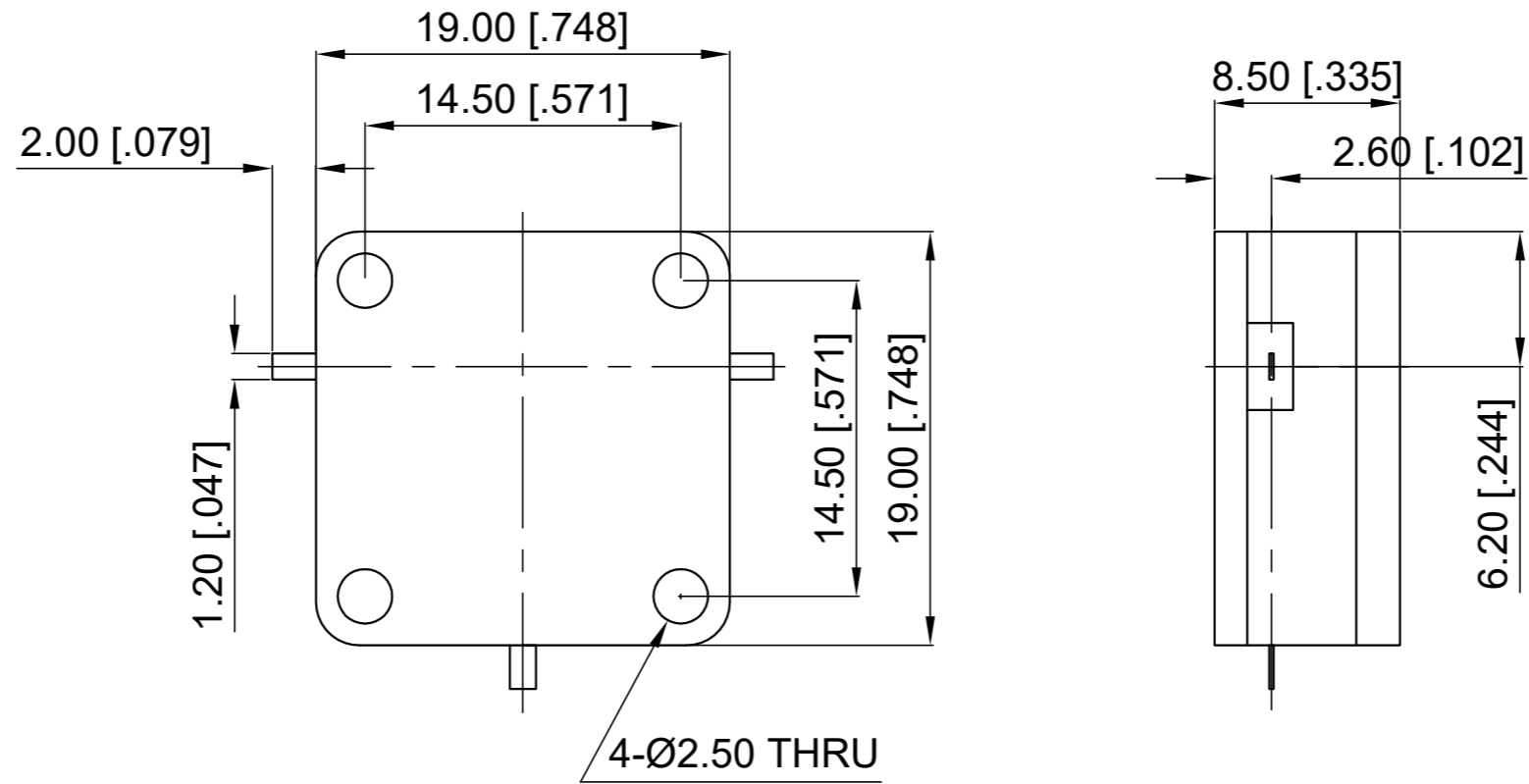
Isolation: 18 dB min.

VSWR: 1.30 max.

Forward Power: 100 W

Direction: Clockwise

Revisions			
Rev	Description	Date	Approved:
A	Initial Release	2019.6.10	A. M
B	Power updated to 100W	2020.1.21	A. M



- NOTES:
1. ALL SPECIFICATIONS ARE SUBJECT TO CHANGE WITHOUT NOTICE AT ANY TIME
  2. CUSTOMER OUTLINE DRAWING FOR REFERENCE ONLY

Drawn:	W. Y 2020.1.21
Checked:	T. L 2020.1.21
Approved:	A. M 2020.1.21
<small>Unless Otherwise Specified Dimensions are in Millimeters,  Dimensions in [ ] are in Inches for Customer Reference Only.  Unless Otherwise Specified Tolerance are:  .XX ±0.13 [.005"] .X ±0.20 [.008"] X ±0.50 [.019"]  .X° ±1° X° ±2°</small>	

Title: Drop-in Circulator  
Freq 2300-2700 MHz

Part No: DDC230270



View:	
Size:	A3
Scale:	3:1
Sheet:	1/1
Rev:	B