

### Performance Features

Nominal Impedance: 50Ω

Durability: 500 Cycles

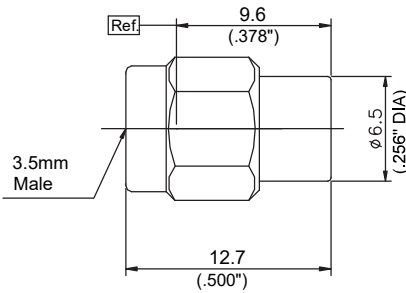
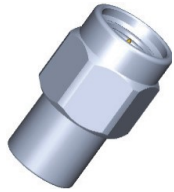
Operating Temperature: -55°C~+125°C

### Materials/Finishes

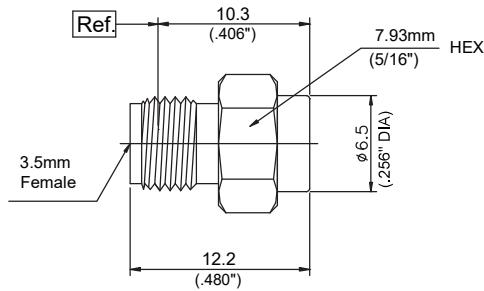
Housing: Type 303 Stainless Steel - Polished & Passivated

Center Contact: Beryllium Copper Plated Gold

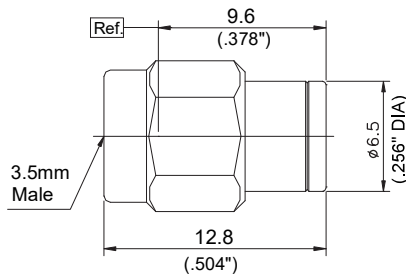
Insulators: PEI/PTFE



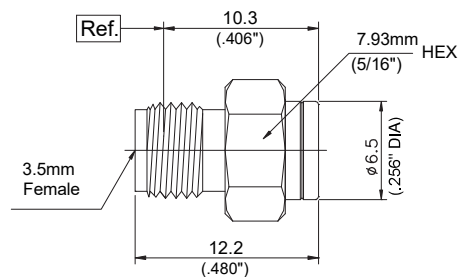
P/N	DPT241-27-1
Descr.	3.5mm Male Termination
Freq.	DC-27GHz
VSWR	1.15:1(Max)
Power	1W



P/N	DPT240-27-1
Descr.	3.5mm Female Termination
Freq.	DC-27GHz
VSWR	1.15:1(Max)
Power	1W



P/N	DPT241-27-2
Descr.	3.5mm Male Termination
Freq.	DC-27GHz
VSWR	1.20:1(Max)
Power	2W



P/N	DPT240-27-2
Descr.	3.5mm Male Termination
Freq.	DC-27GHz
VSWR	1.20:1(Max)
Power	2W