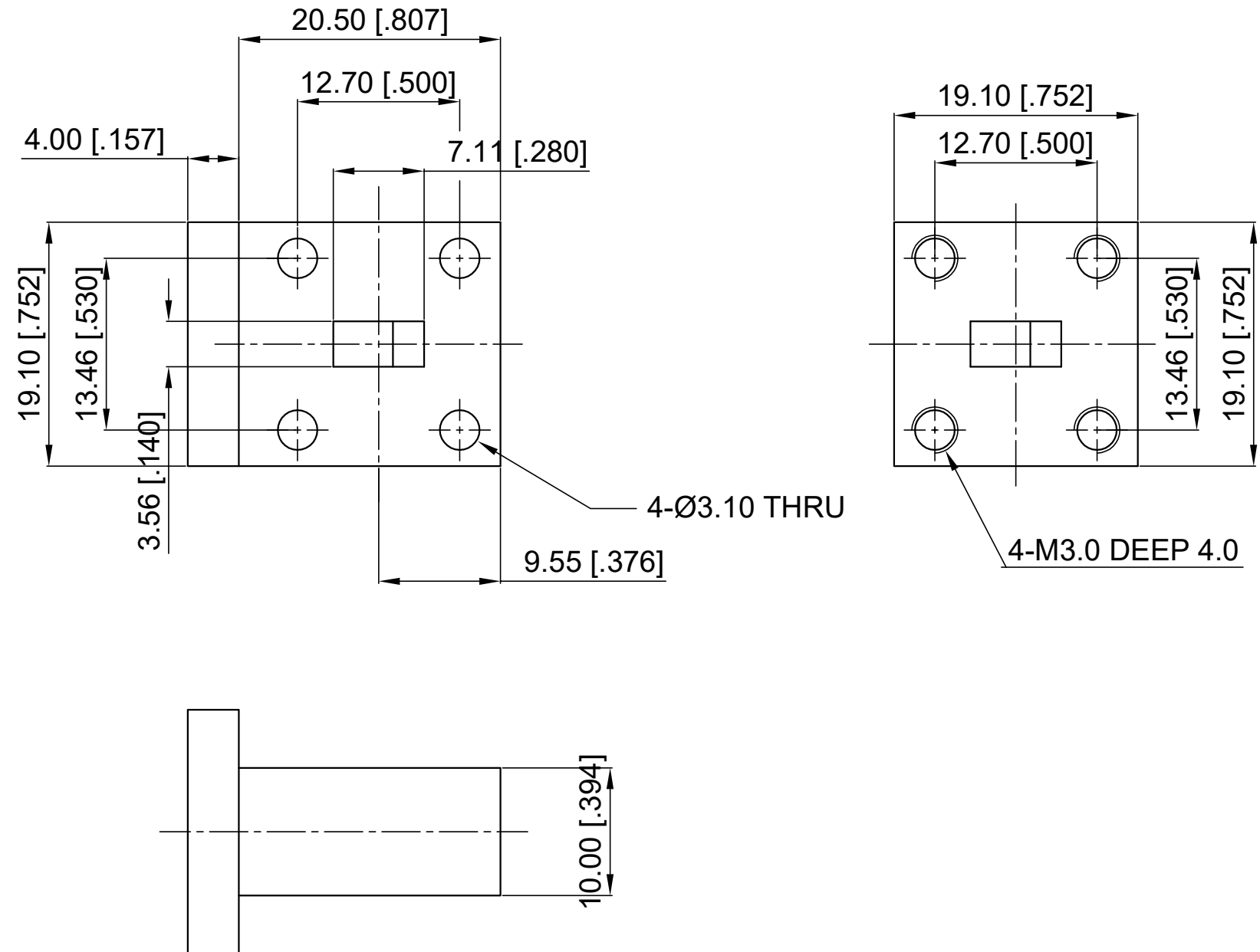


ELECTRICAL SPECIFICATIONS

1. Frequency Range: 35-36 GHz
2. Insertion Loss: 0.30 dB max.
3. Isolation: 23 dB min.
4. VSWR: 1.20 max.
5. Waveguide Type: WR28
6. Direction: Clockwise

Revisions			
Rev	Description	Date	Approved:
A	Initial Release	2013.06.03	A. M



- NOTES:
1. ALL SPECIFICATIONS ARE SUBJECT TO CHANGE WITHOUT NOTICE AT ANY TIME
 2. CUSTOMER OUTLINE DRAWING FOR REFERENCE ONLY

Drawn:	W. Y 2013.06.03
Checked:	T. L 2013.06.03
Approved:	A. M 2013.06.03
Unless Otherwise Specified Dimensions are in Millimeters, Dimensions in [] are in Inches for Customer Reference Only. Unless Otherwise Specified Tolerance are: .XX ±0.13 [0.005"] .X ±0.20 [0.008"] X ±0.50 [0.019"] .X° ±1° X° ±2°	

Title:	WR28 Circulator Freq 35-36 GHz
Part No:	DWC28F3536

DEEWAVE
www.deewave.com

View:

Size: A3	Scale: 1.5:1	Sheet: 1/1	Rev: A
----------	--------------	------------	--------