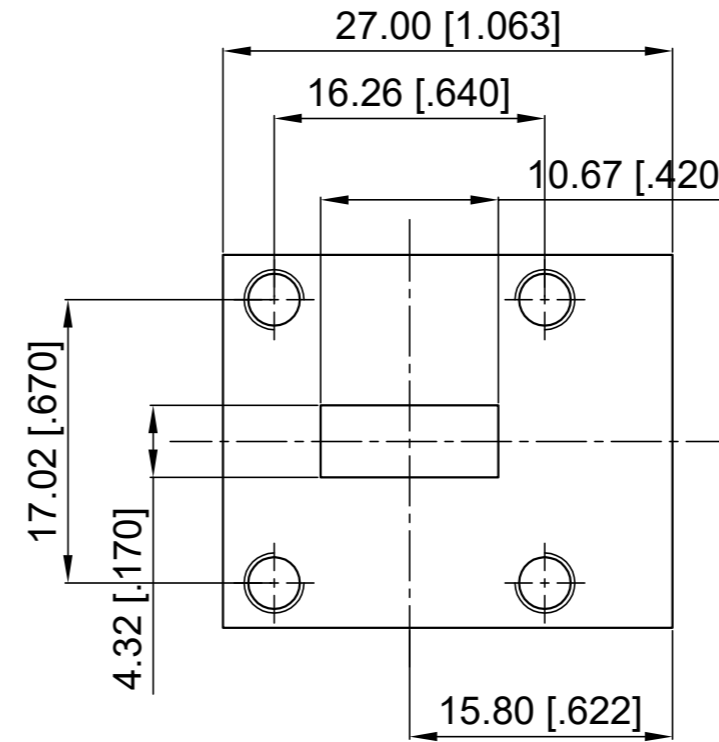
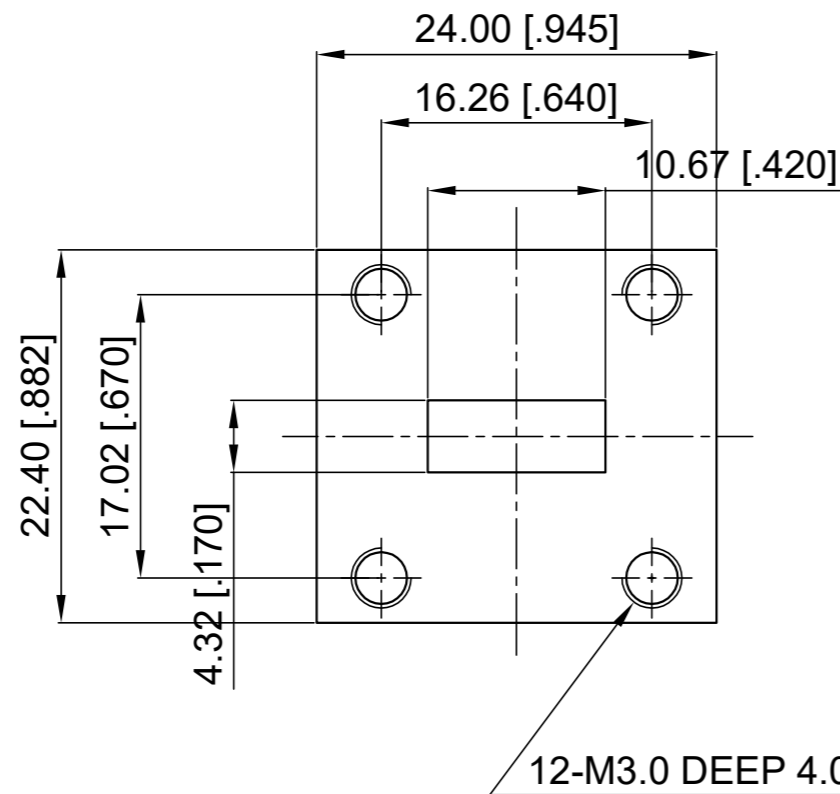
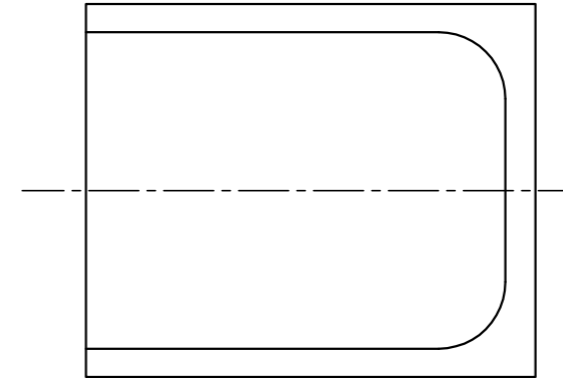


ELECTRICAL SPECIFICATIONS

1. Frequency Range: 24.5-26.5 GHz
2. Insertion Loss: 0.40 dB max.
3. Isolation: 20 dB min.
4. VSWR: 1.25 max.
5. Waveguide Type: WR42
6. Director: Clockwise

Revisions			
Rev	Description	Date	Approved:
A	Initial Release	2017.10.10	A. M



NOTES:

1. ALL SPECIFICATIONS ARE SUBJECT TO CHANGE WITHOUT NOTICE AT ANY TIME
2. CUSTOMER OUTLINE DRAWING FOR REFERENCE ONLY

Drawn:	W. Y 2017.10.10
Checked:	T. L 2017.10.10
Approved:	A. M 2017.10.10
Unless Otherwise Specified Dimensions are in Millimeters, Dimensions in [] are in Inches for Customer Reference Only. Unless Otherwise Specified Tolerance are: .XX ±0.13 [.005"] .X ±0.20 [.008"] X ±0.50 [.019"] .X° ±1° X° ±2°	

Title:	WR42 Circulator Freq 24.5-26.5 GHz
Part No:	DWC42F245265



View:	
Size:	A3
Scale:	1.5:1
Sheet:	1/1
Rev:	A