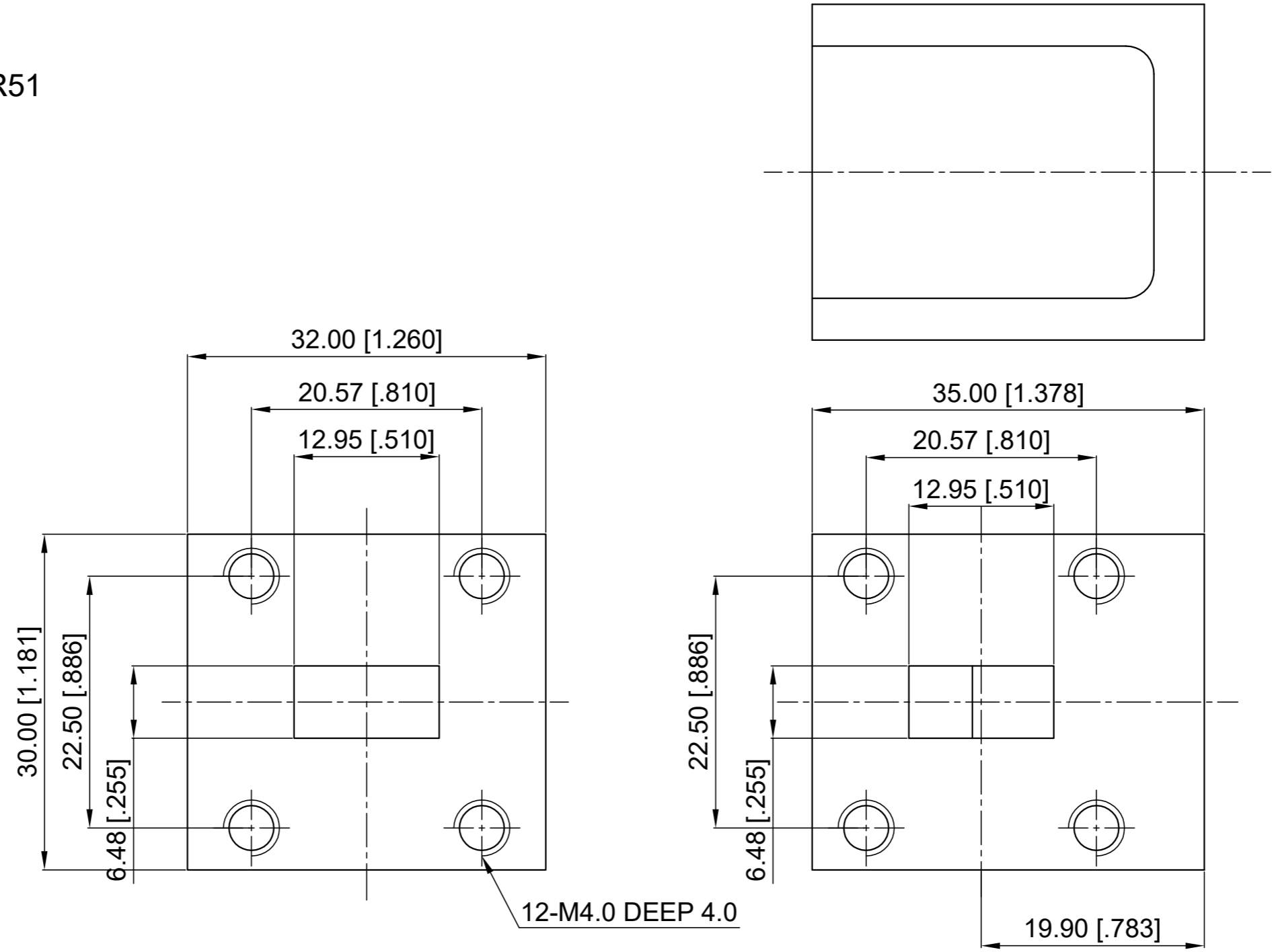


# ELECTRICAL SPECIFICATIONS

1. Frequency Range: 17-21.5 GHz
2. Insertion Loss: 0.50 dB max.
3. Isolation: 17 dB min.
4. VSWR: 1.35 max.
5. Waveguide Type: WR51
6. Direction: Clockwise

Revisions			
Rev	Description	Date	Approved:
A	Initial Release	2019.12.18	A. M



NOTES:

1. ALL SPECIFICATIONS ARE SUBJECT TO CHANGE WITHOUT NOTICE AT ANY TIME
2. CUSTOMER OUTLINE DRAWING FOR REFERENCE ONLY

Drawn:	W. Y 2019.12.18
Checked:	T. L 2019.12.18
Approved:	A. M 2019.12.18
Unless Otherwise Specified Dimensions are in Millimeters, Dimensions in [ ] are in Inches for Customer Reference Only. Unless Otherwise Specified Tolerance are: .XX ±0.13 [.005"]    .X ±0.20 [.008"]    X ±0.50 [.019"] .X° ±1°                    X° ±2°	

Title:	WR51 Circulator Freq 17-21.5 GHz
Part No:	

**DEEWAVE**  
www.deewave.com

View:

Size: A3	Scale: 1.5:1	Sheet: 1/1	Rev: A
----------	--------------	------------	--------