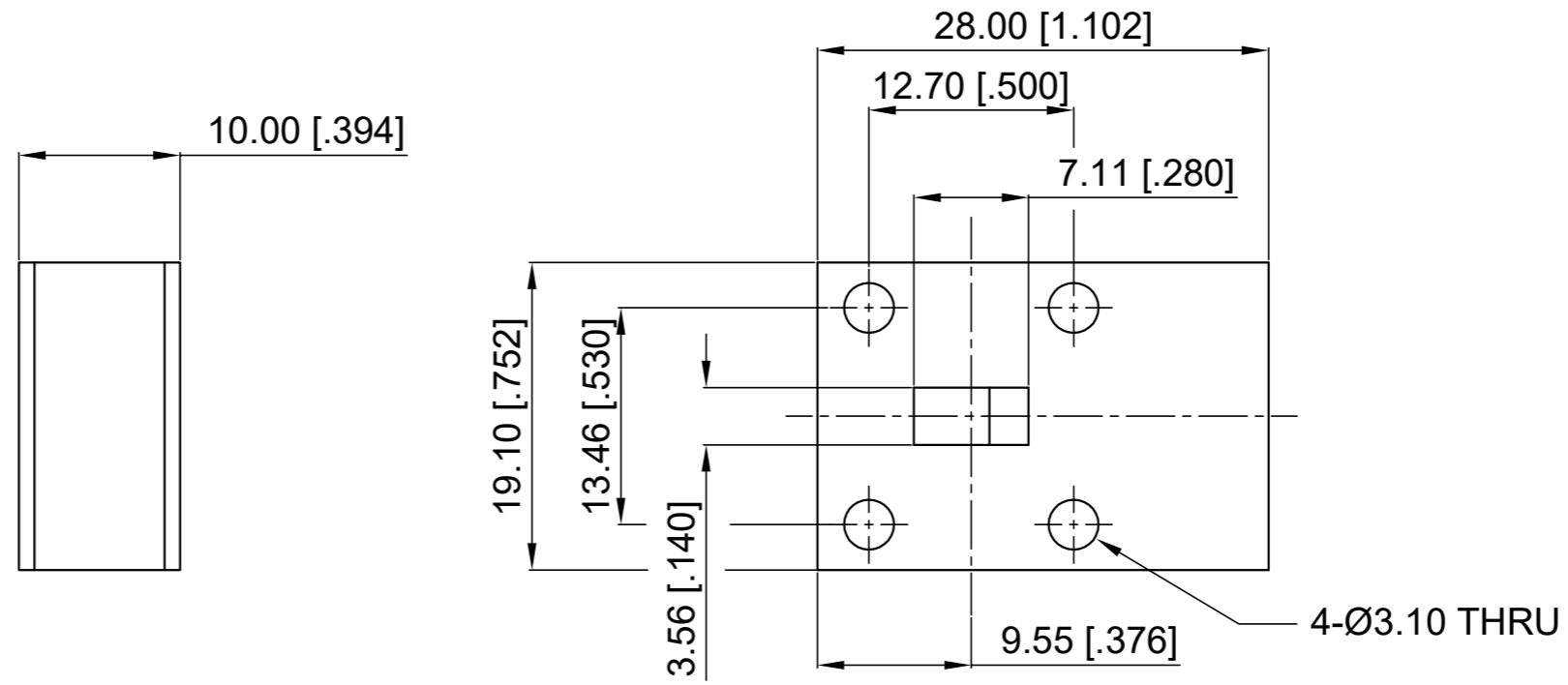


ELECTRICAL SPECIFICATIONS

1. Frequency Range: 33-38 GHz
2. Insertion Loss: 0.70 dB max.
3. Isolation: 16 dB min.
4. VSWR: 1.45 max.
5. Average Power: 15W
6. Waveguide Type: WR28
7. Director: Clockwise

Revisions			
Rev	Description	Date	Approved:
A	Initial Release	2020.1.11	A. M



NOTES:

1. ALL SPECIFICATIONS ARE SUBJECT TO CHANGE WITHOUT NOTICE AT ANY TIME
2. CUSTOMER OUTLINE DRAWING FOR REFERENCE ONLY

Drawn:	W. Y 2020.1.11
Checked:	T. L 2020.1.11
Approved:	A. M 2020.1.11
Unless Otherwise Specified Dimensions are in Millimeters, Dimensions in [] are in Inches for Customer Reference Only. Unless Otherwise Specified Tolerance are: .XX ±0.13 [.005"] .X ±0.20 [.008"] X ±0.50 [.019"] .X° ±1° X° ±2°	

Title:	WR28 Isolator Freq 33-38 GHz
Part No:	DWI28F330380

DEEWAVE
www.deewave.com

View:

Size: A3	Scale: 1.5:1	Sheet: 1/1	Rev: A
----------	--------------	------------	--------