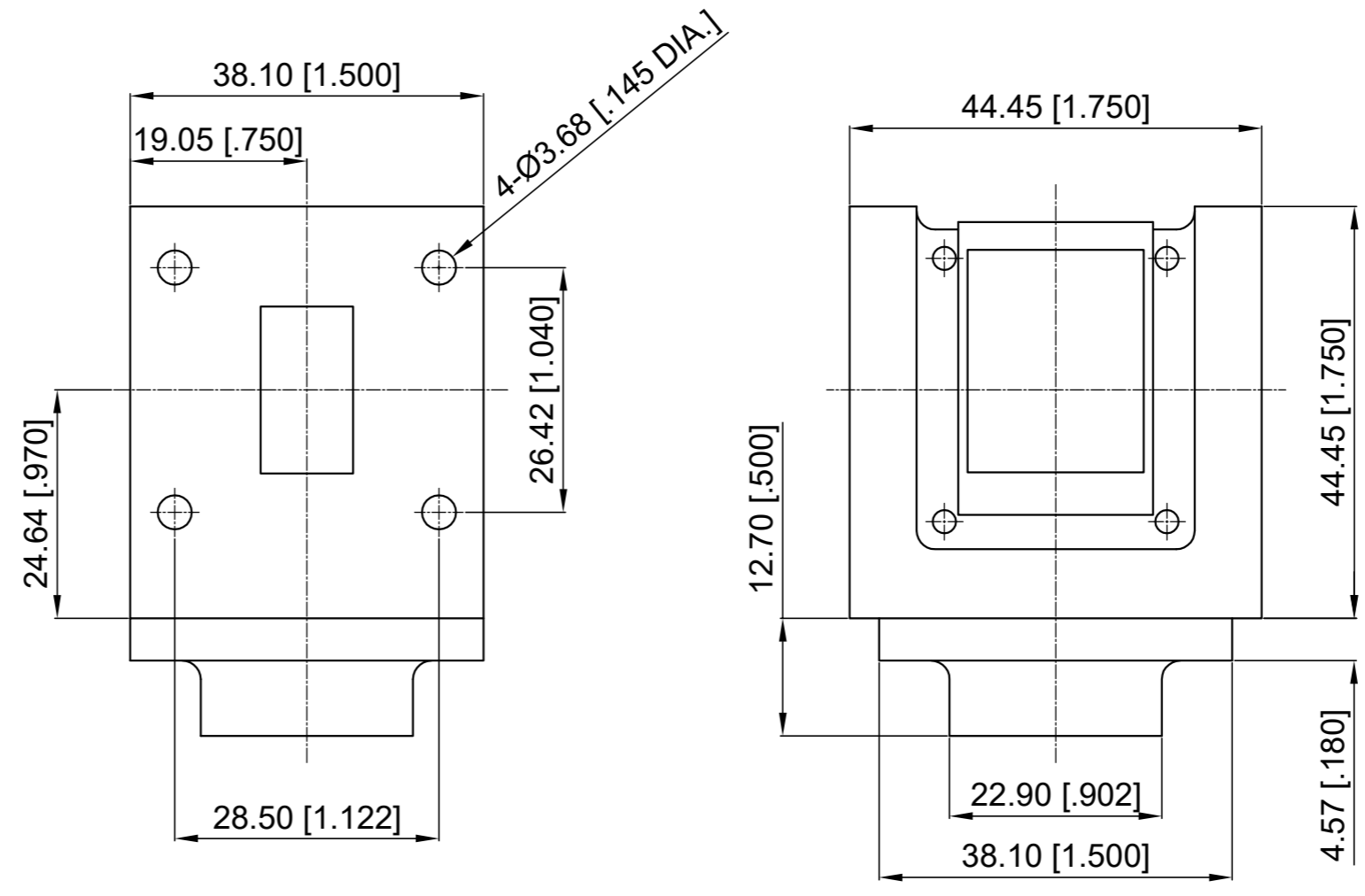


Revisions			
Rev	Description	Date	Approved:
A	Initial Release	2014.3.8	A. M

ELECTRICAL SPECIFICATIONS

1. Frequency Range: 10.7-12.8 GHz
2. Insertion Loss: 0.30 dB max.
3. Isolation: 22 dB min.
4. VSWR: 1.25 max.
5. Forward Power: 60W
6. Reverse Power: 10W
7. Waveguide Type: WR75
8. Director: Clockwise



NOTES:

1. ALL SPECIFICATIONS ARE SUBJECT TO CHANGE WITHOUT NOTICE AT ANY TIME
2. CUSTOMER OUTLINE DRAWING FOR REFERENCE ONLY

Drawn:	W. Y 2014.3.8
Checked:	T. L 2014.3.8
Approved:	A. M 2014.3.8
Unless Otherwise Specified Dimensions are in Millimeters, Dimensions in [] are in Inches for Customer Reference Only. Unless Otherwise Specified Tolerance are: .XX ±0.13 [.005"] .X ±0.20 [.008"] X ±0.50 [.019"] .X° ±1° X° ±2°	

Title:	WR75 Isolator Freq 10.7~12.8GHz
Part No:	DWI75F107128



View:	
Size:	A3
Scale:	1:1
Sheet:	1/1
Rev:	A