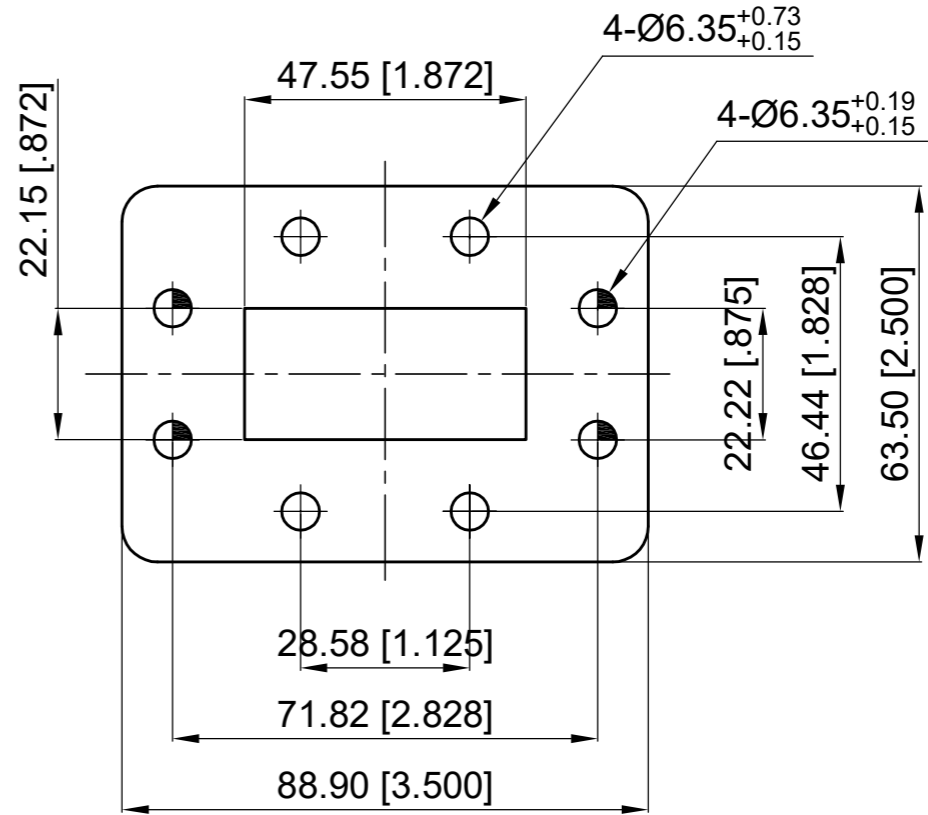
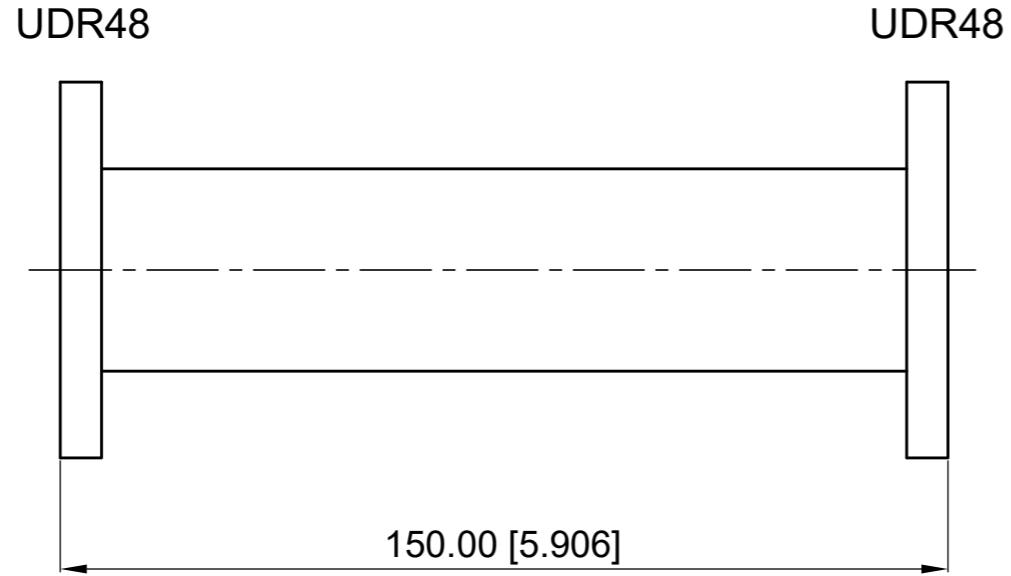


Revisions			
Rev	Description	Date	Approved:
A	Initial Release	2022.7.2	A. M

**ELECTRICAL PERFORMANCE**  
 Frequency Range: 3.94-5.99 GHz  
 VSWR: 1.05 max.

**MATERIAL**  
 Body: Aluminum, Oxized  
 Paint: Gray



NOTES:

1. ALL SPECIFICATIONS ARE SUBJECT TO CHANGE WITHOUT NOTICE AT ANY TIME
2. CUSTOMER OUTLINE DRAWING FOR REFERENCE ONLY

Drawn:	W. Y 2022.7.2
Checked:	T. L 2022.7.2
Approved:	A. M 2022.7.2
Unless Otherwise Specified Dimensions are in Millimeters, Dimensions in [ ] are in Inches for Customer Reference Only. Unless Otherwise Specified Tolerance are: .XX ±0.13 [.005"] .X ±0.20 [.008"] X ±0.50 [.019"] .X° ±1° X° ±2°	

Title:	Straight Waveguide, WR187(UDR48) at Both Side, Length 150 mm
Part No:	<b>DSW187D1D1-150</b>

**DEEWAVE**  
[www.deewave.com](http://www.deewave.com)

View:

Size:	Scale:	Sheet:	Rev:
A3	1.25:1	1/1	A