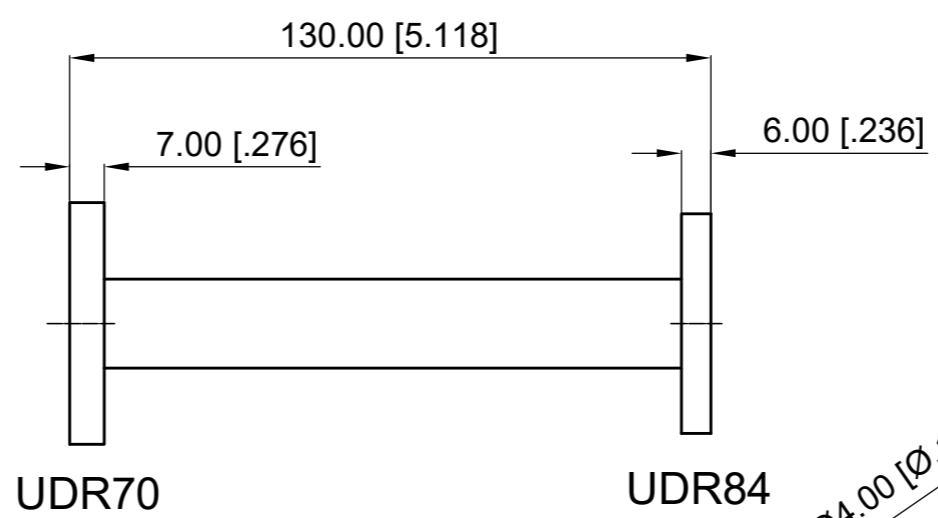
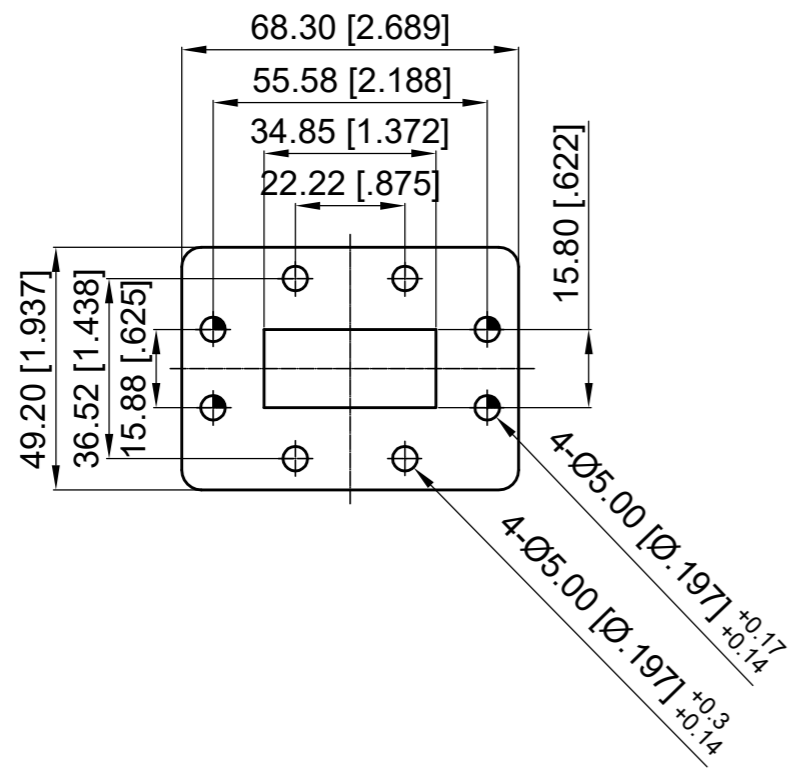


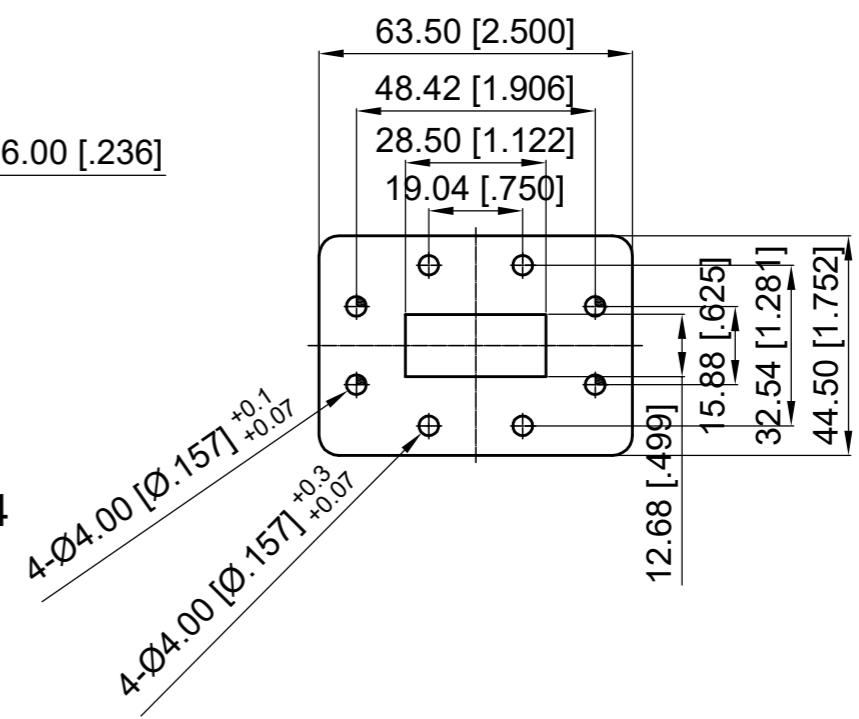
**ELECTRICAL PERFORMANCE**  
 Frequency Range: 6.57-8.17 GHz  
 VSWR: 1.10 max.  
 Port 1: WR137 (UDR70)  
 Port 2: WR112 (UDR84)

**MATERIAL**  
 Body: Aluminum, Oxidized  
 Paint: Gray

Revisions			
Rev	Description	Date	Approved:
A	Initial Release	2022.8.9	A. M



UDR70



UDR84

NOTES:  
 1. ALL SPECIFICATIONS ARE SUBJECT TO CHANGE WITHOUT NOTICE AT ANY TIME  
 2. CUSTOMER OUTLINE DRAWING FOR REFERENCE ONLY

Drawn:	W. Y 2022.8.9
Checked:	T. L 2022.8.9
Approved:	A. M 2022.8.9
Unless Otherwise Specified Dimensions are in Millimeters, Dimensions in [ ] are in Inches for Customer Reference Only. Unless Otherwise Specified Tolerance are: .XX ±0.13 [.005"] .X ±0.20 [.008"] X ±0.50 [.019"] .X° ±1° X° ±2°	

Title:	WR137 (UDR70) to WR112 (UDR84) Waveguide Transition, Length 130mm
Part No:	DWT137D1-112D1-130



View:	
Size:	A3
Scale:	1:3
Sheet:	1/1
Rev:	A