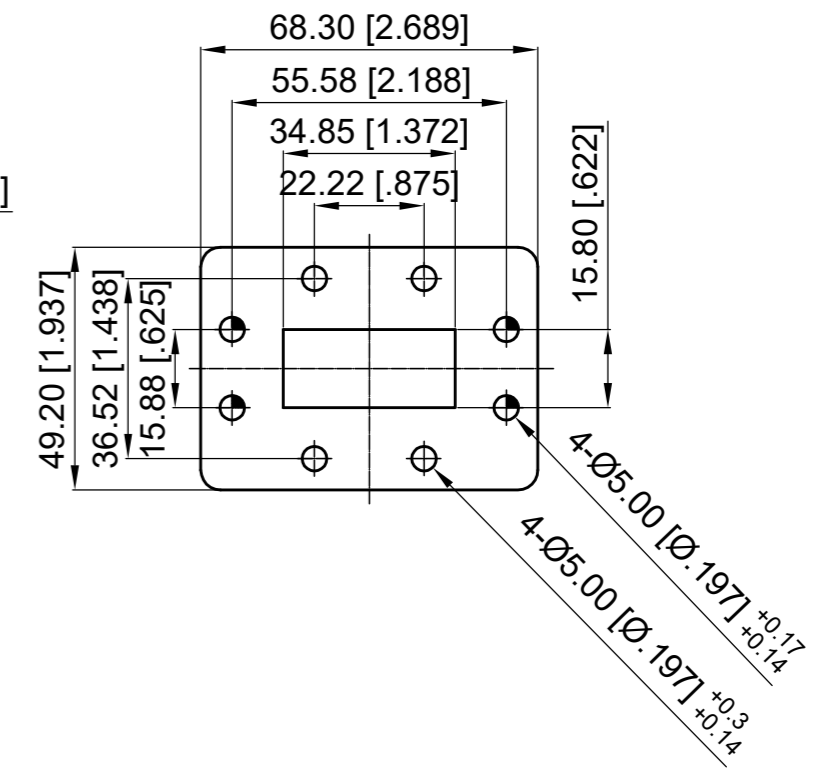
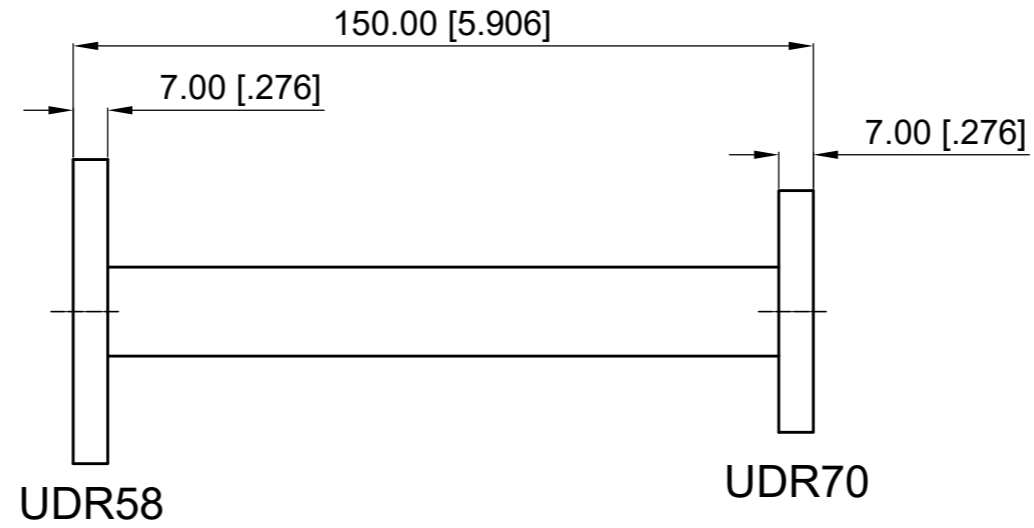
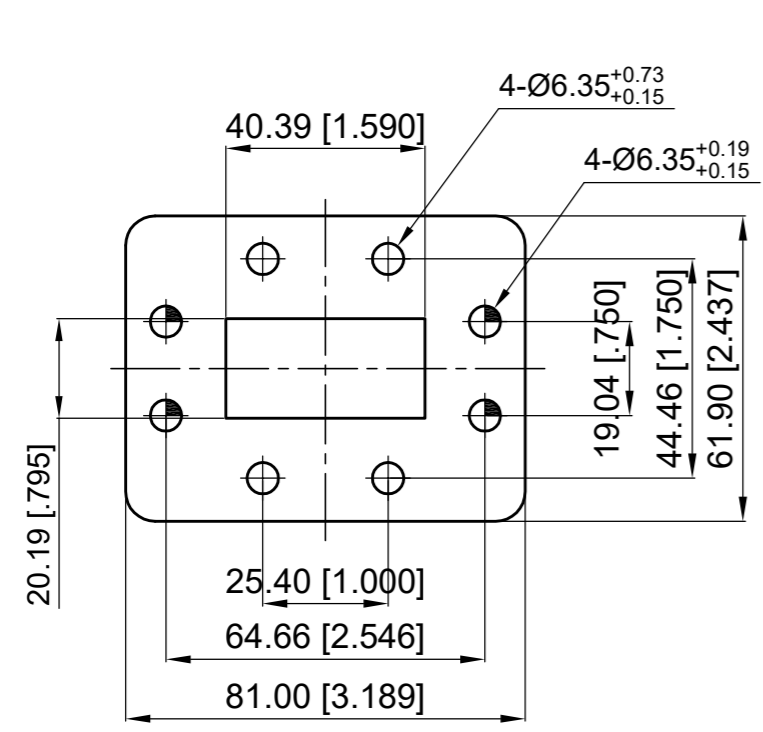


ELECTRICAL PERFORMANCE
 Frequency Range: 5.38-7.05 GHz
 VSWR: 1.10 max.
 Port 1: WR159 (UDR58)
 Port 2: WR137 (UDR70)

MATERIAL
 Body: Aluminum, Oxidized
 Paint: Gray

Revisions			
Rev	Description	Date	Approved:
A	Initial Release	2022.8.9	A. M



NOTES:
 1. ALL SPECIFICATIONS ARE SUBJECT TO CHANGE WITHOUT NOTICE AT ANY TIME
 2. CUSTOMER OUTLINE DRAWING FOR REFERENCE ONLY

Drawn:	W. Y 2022.8.9
Checked:	T. L 2022.8.9
Approved:	A. M 2022.8.9
Unless Otherwise Specified Dimensions are in Millimeters, Dimensions in [] are in Inches for Customer Reference Only. Unless Otherwise Specified Tolerance are: .XX ±0.13 [.005"] .X ±0.20 [.008"] X ±0.50 [.019"] .X° ±1° X° ±2°	

Title:
 WR159 (UDR58) to WR137 (UDR70)
 Waveguide Transition, Length 150mm
 Part No:
DWT159D1-137D1-150



View:	
Size:	A3
Scale:	1:3
Sheet:	1/1
Rev:	A